

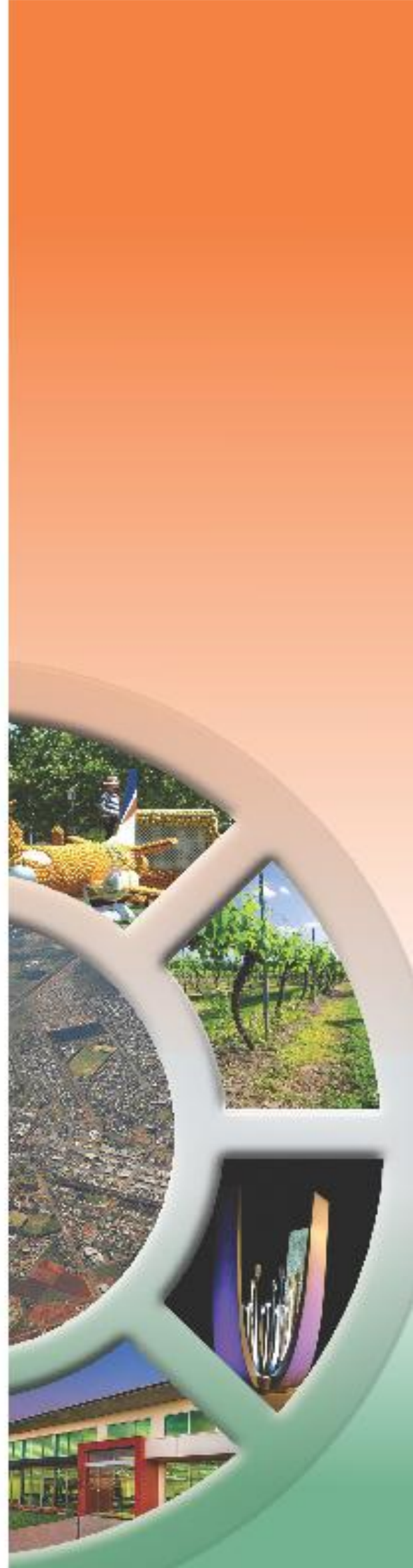


# Ordinary Meeting

**Tuesday, 26 May 2026**

**ATTACHMENTS  
UNDER SEPARATE  
COVER**

**Minutes of the Roads, Parks & Pathways  
Enhancement Committee held on 5 May 2026**



---

## ATTACHMENTS UNDER SEPARATE COVER

Page

Minutes of the Roads, Parks & Pathways Enhancement Committee held on  
5 May 2026

(a) Griffith CBD Enhancement – Presentation ..... 3

# Sustainable Communities Funding



# CBD Enhancement Project

1

- **DOCUMENT OUTLINE**

- **CBD Strategy**
  - Key Components

- **CBD Enhancement Project**
  - Public consultation outcomes
  - Progress

# CBD STRATEGY

## Key Components



3

## **CBD STRATEGY**

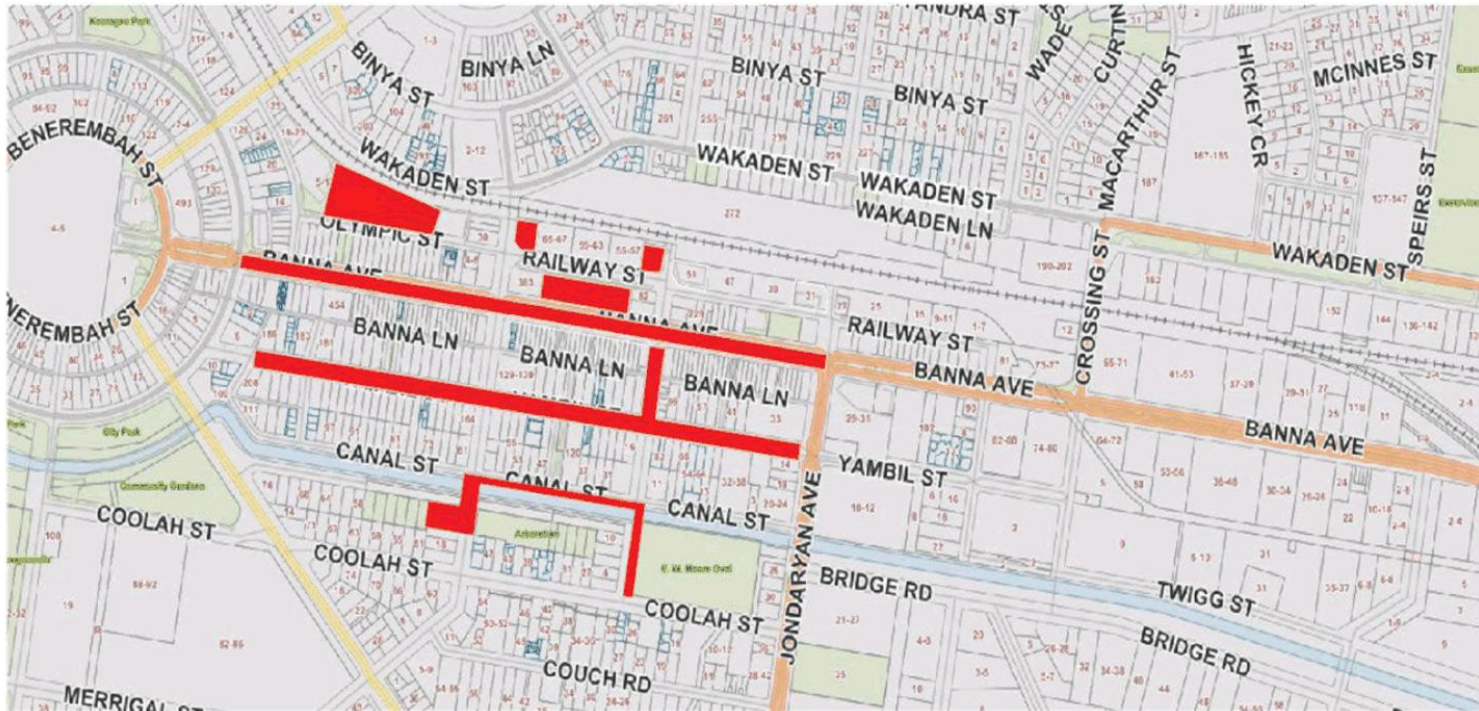
### **Key Components**

- 1. Parking**
- 2. Pedestrian network**
- 3. Cycle network**
- 4. Creating dwell time**
- 5. Nightlife improvement**
- 6. Placemaking**
- 7. Public benches and seating**



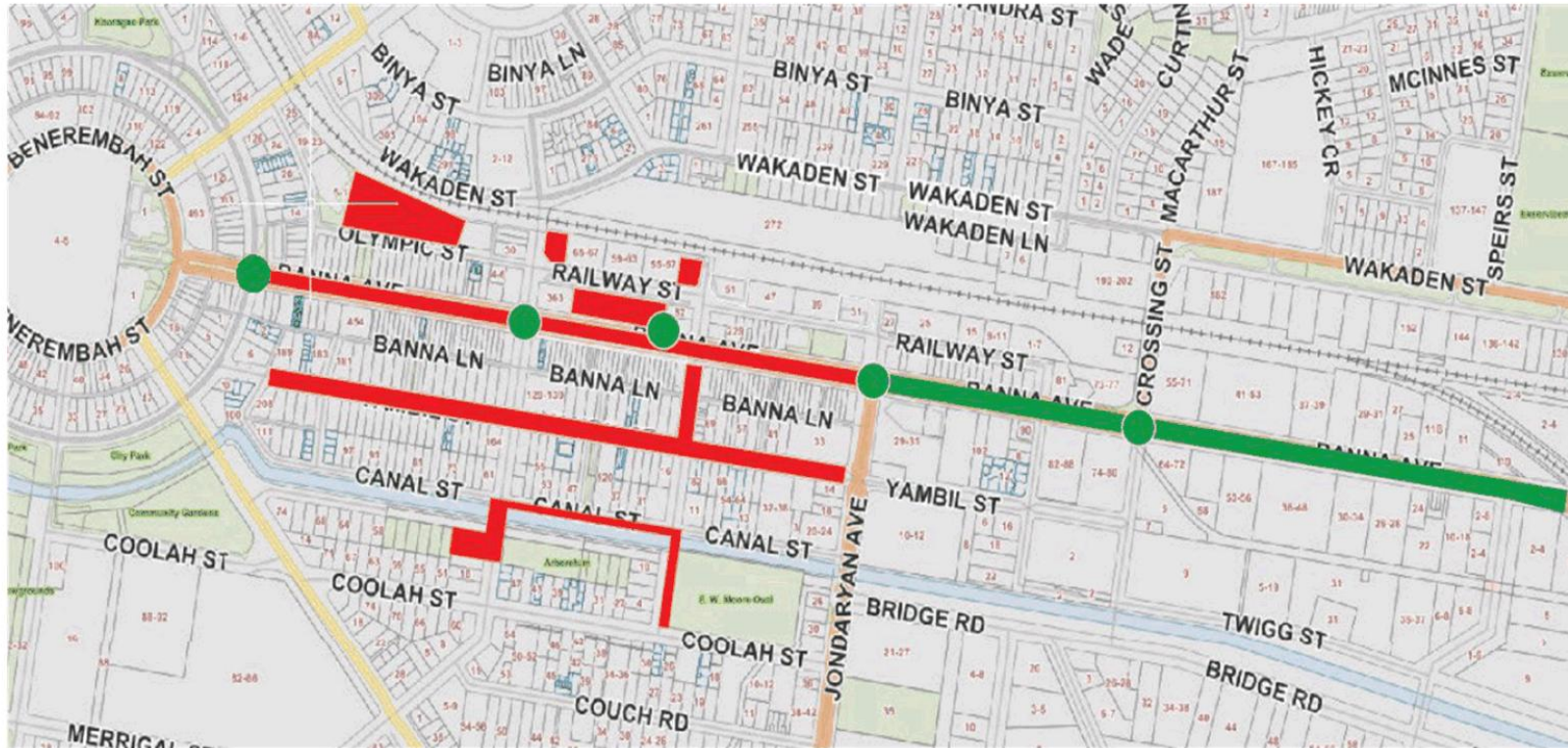
# CBD STRATEGY

## Completed Works



# CBD Enhancement Project

## Focus Area (Green)



# CBD ENHANCEMENT PROJECT

## Project Components



7

# **CBD ENHANCEMENT PROJECT**

## **Project Components**

- 1. Roundabout and Median Strip beautification**
- 2. Memorial gardens entrance**
- 3. Modification of and additional tree lighting (Banna)**
- 4. Power and Data Upgrades**
- 5. Shared pathway**
- 6. Tree maintenance and surrounds**
- 7. Replacement of banners**
- 8. Irrigation**

# 1. **ROUNABOUT AND MEDIAN STRIP BEAUTIFICATION**

## Design Options

**Option 1:**

**Incorporate native plants that thrive in the local environment, requiring limited water and low maintenance.**

**Option 2:**

**Use succulents, which demand minimal water and upkeep.**

**Option 3:**

**Create a diverse landscape by combining a variety of vegetation, including exotic species.**

**In the final design, a combination of these options may be adopted, informed by input from this committee and submissions received during the public exhibition.**

# 1.1.1. Option 1. - Natives Roundabout



NAME	CODE
<i>Chrysocephalum apiculatum</i>	CA
<i>Anigozanthos hybrid</i>	AZ
<i>Doryanthes excelsa</i>	DE



*Chrysocephalum apiculatum*



*Anigozanthos Hybrid*



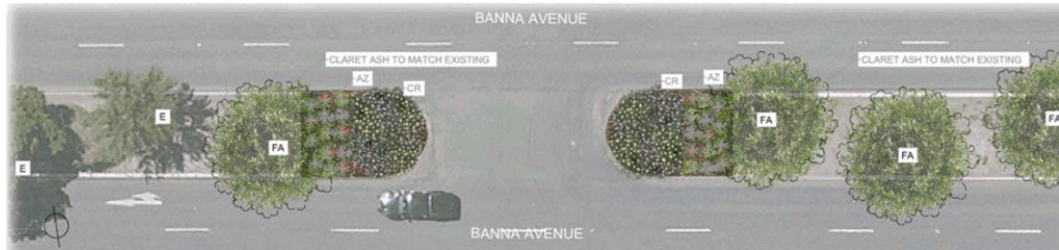
*Doryanthes excelsa*

## 1.1.1. Option 1. - Natives Roundabout

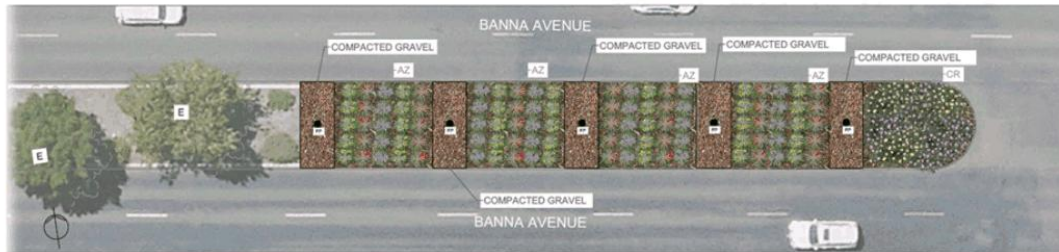


11

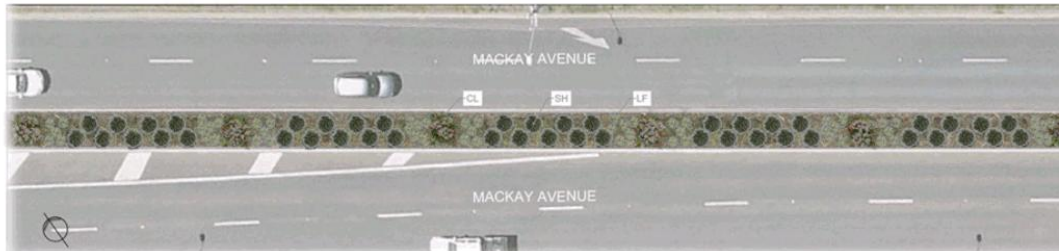
## 1.1.2. Option 1. - Natives Median Strips



BANNA AVENUE TYPICAL TRAFFIC ISLAND - NATIVE OPTION



BANNA AVENUE FLAG POLE - NATIVE OPTION



MACKAY AVENUE - NATIVE OPTION

NAME	CODE
<i>Carpobrotus glaucescens</i>	CR
<i>Anigozanthos hybrid</i>	AZ
<i>Callistemon 'Sweet Burst'</i>	CL
<i>Scaevola humilis 'Pink Fusion'</i>	SH
<i>Lomandra longifolia</i>	LF



*Carpobrotus glaucescens*



*Anigozanthos Hybrid*



*Callistemon 'Sweet Burst'*



*Scaevola humilis 'Pink Fusion'*



*Lomandra longifolia 'Great white'*

## 1.1.2. Option 1. - Natives Median Strips – Banna Avenue



13

## 1.1.2. Option 1. - Natives Median Strips – Mackay Avenue



14

## 1.2.1. Option 2. - Succulents Roundabout



NAME	CODE
<i>Chrysocephalum apiculatum</i>	CR
<i>Agave stricta</i>	AS
<i>Agave victoriae-reginae</i>	QV
<i>Trichocereus knuthianus</i>	TK
<i>Dracaena draco</i>	DD



*Chrysocephalum apiculatum*



*Agave stricta*



*Agave victoriae-reginae*



*Trichocereus knuthianus*



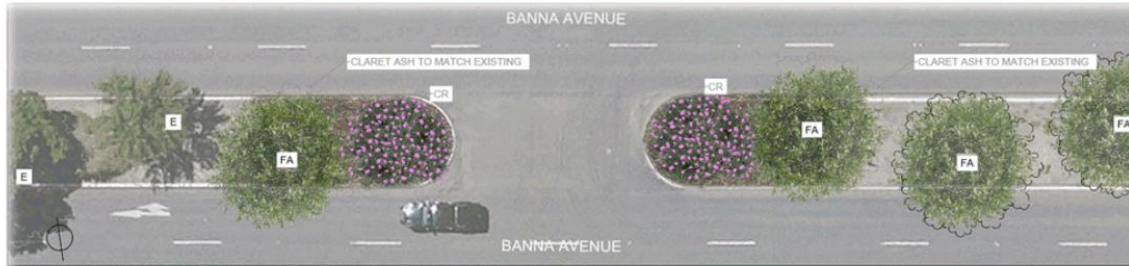
*Dracaena draco*

## 1.2.1. Option 2. - Succulents Roundabout



16

## 1.2.2. Option 2. Median Strips

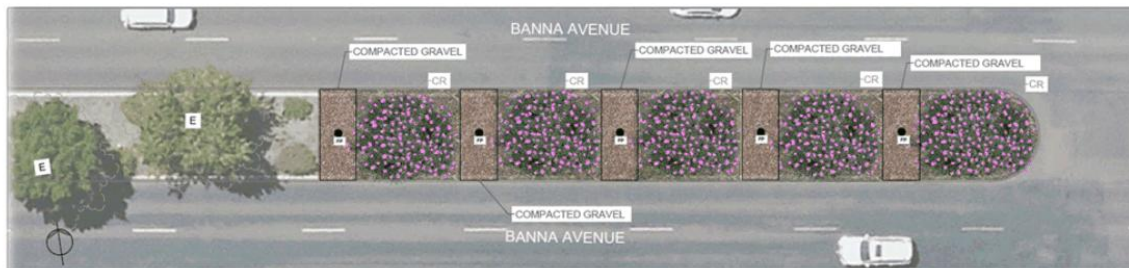


BANNA AVENUE TYPICAL TRAFFIC ISLAND - SUCCULENT MIX OPTION

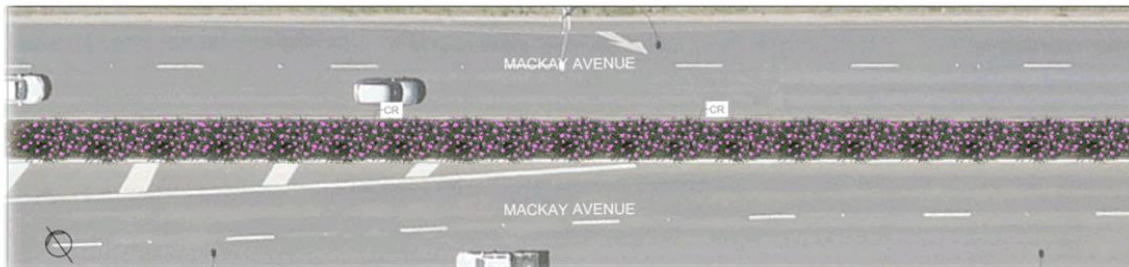
NAME	CODE
<i>Carpobrotus glaucescens</i>	CR
Existing Tree	E



Carpobrotus Glaucescens



BANNA AVENUE FLAG POLE - SUCCULENT MIX OPTION



MACKAY AVENUE - SUCCULENT MIX OPTION

## 1.2.2. Option 2. - Succulents Median Strips – Banna Avenue



## 1.2.2. Option 2. - Succulents Median Strips – Mackay Avenue



## 1.3.1. Option 3. – Mixed Vegetation Roundabout



NAME	CODE
<i>Carpobrotus glaucescens</i>	CR
<i>Liriope muscari</i> 'Amethyst'	LA
<i>Lagerstroemia indica</i> 'Natchez'	LN



*Carpobrotus glaucescens*



*Liriope muscari* 'Amethyst'



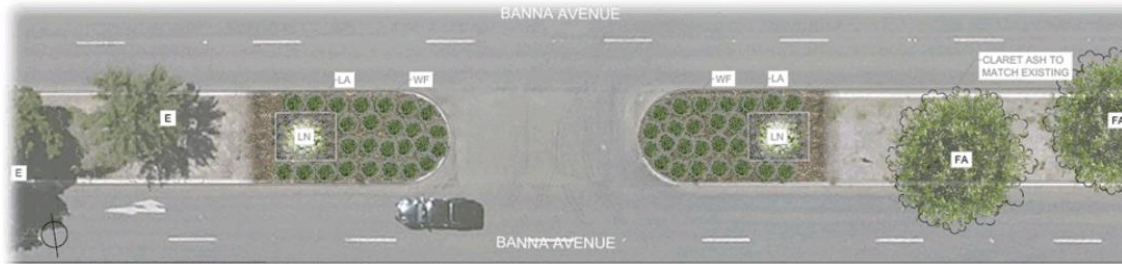
*Lagerstroemia indica* 'Natchez'

## 1.3.1. Option 3. – Mixed Vegetation Roundabout

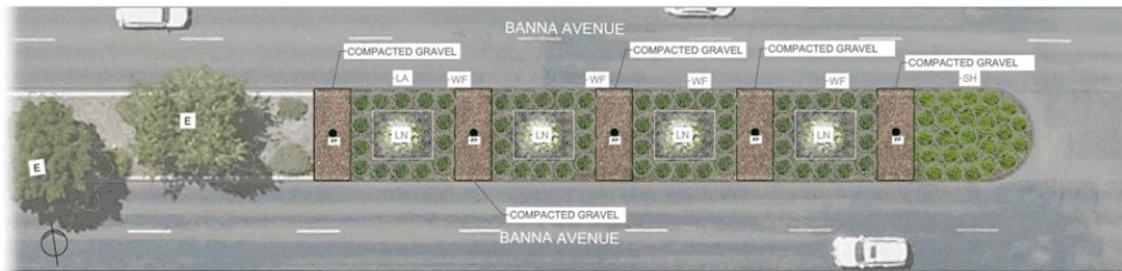


21

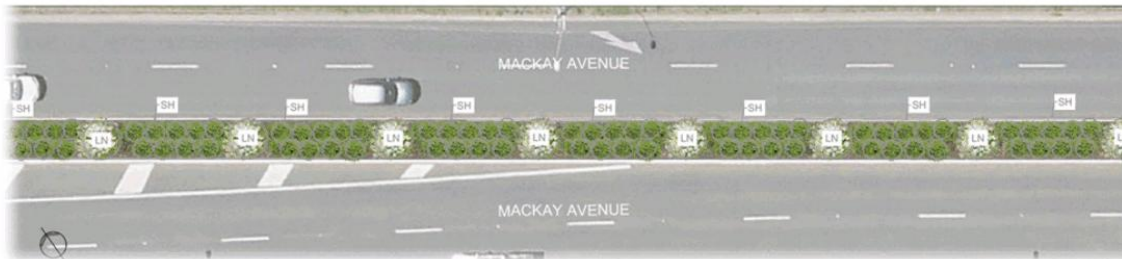
# 1.3.2. Option 3. – Mixed Vegetation Median Strips



BANNA AVENUE TYPICAL TRAFFIC ISLAND - EXOTIC MIX OPTION



BANNA AVENUE FLAG POLE - EXOTIC MIX OPTION



NAME	CODE
<i>Westringea fruticosa</i>	WF
<i>Lilrope muscari</i> 'Amethyst'	LA
<i>Lagerstroemia indica</i> 'Natchez'	LN
<i>Scaevola humilis</i>	SH
Existing Tree	E



*Westringea fruticosa* 'Low Horizon'



*Lilrope muscari* 'Amethyst'



*Lagerstroemia indica* 'Natchez'



*Scaevola humilis* 'Pink Fusion'

## 1.3.2. Option 3. – Mixed Vegetation Median Strips – Banna Avenue



23

## 1.3.2. Option 3. – Mixed Vegetation Median Strips – Mackay Avenue



## 1. 2.1. Public Consultation Feedback

- **Key Takeaways**

- Strong preference for **low-maintenance, drought-tolerant planting**, with a roughly **50/50 split between support for succulents and a mix of native and exotic species**
- **Safety is critical** – planting must be **low-height to maintain visibility** at roundabouts
- Clear desire for **improved ongoing maintenance and adequate funding** for landscaping
- Some interest in:
  - **Public art or feature elements**
- Additional feedback focused on:
  - **Upgrading existing streetscapes and entrances**
  - **Completing unfinished works** (e.g. paving)
- **Overall:**  
The community supports **simple, low-height, and maintainable planting**, with a strong emphasis on **safety and ongoing upkeep over complex design**.

## 1. 2.1. Public Consultation Feedback

- **Current Action**
- Council requested a **draft design and cost estimate** from local landscaper, which informed Council's procurement approach.
- Council requested four suppliers to submit quotes for the design of the CBD Landscaping upgrade.
- Three compliant quotes were received. The fourth who failed to submit a compliant quote was a local landscape designer.
- All three were from registered Landscape Architects in NSW/ACT with a history of Government and Public Infrastructure work. We are currently assessing the quotations based on experience of work in similar projects, value for money and deliverability.
- The selected Landscape Architect will use the Public exhibition responses as a guideline.
- The aim is to have Designs for consultation by the end of June 2026.

## 2. Memorial Gardens Entrance

- Memorial Gardens Entrance, providing shade over Rotary tiled panels.



## 2.1. Public Consultation Feedback

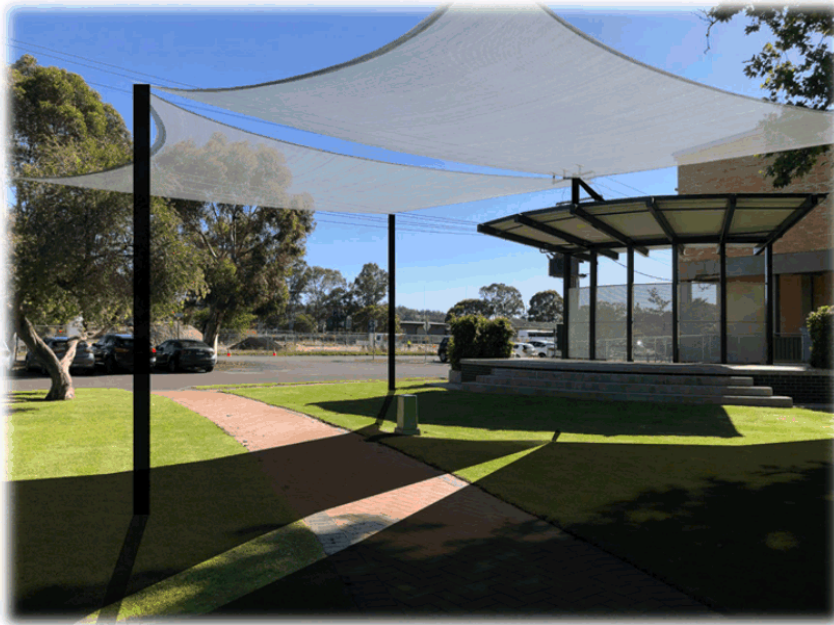
### Key Takeaways

- Feedback is **highly mixed, with an overall negative sentiment**
- Key concerns include:
  - Perception that the project is **unnecessary or a poor use of funds**
  - **Visual impact**, with concerns it may not suit the character of the park
- Preference for:
  - Shade sails at stage
  - Increased greenery and garden improvements
  - Addressing irrigation issues and plant health
- Some support where:
  - The structure provides **shade and protection**, improving longevity of tiles
  - It creates opportunities for **seating or multipurpose use**

### Overall:

The proposal lacks support, with a clear preference for **investment in park maintenance and enhancements rather than a new structure**. Preference for shade sails at stage.

## 2.2 Public Consultation Feedback



### Current Action

- A Concept design and quote to deal with the shade issues at the stage was requested from Ellis and Sons.

### 3. Modification of and additional tree lighting

- Service of all existing tree fairy lights in Banna Avenue
- Installation of fairy lights in 10 additional trees, including electrical supply to the trees.



## 3.1. Public Consultation Feedback

### Key Takeaways

- **Generally well supported**, particularly for:
  - **Improved safety and night-time visibility**
  - Enhancing **atmosphere and vibrancy**
- Suggestions include:
  - Extending lighting to **additional areas** (e.g. pergolas and crossings)
- Concerns include:
  - **Cost versus value**
  - Perception by some that it is **not a priority compared to maintenance needs**
- Strong call for:
  - **Ongoing maintenance of existing lights and trees**

### Overall:

Tree lighting is **positively received**, with clear expectations around **maintenance, cost justification, and prioritisation**.

## 3.1. Public Consultation Feedback

### Current Action

- A quote has been requested from *Climbcare* for:
  - Maintenance of **existing tree lighting**
  - Installation of **lighting in 10 additional trees**
- Climbcare has supplied the **electrical supply requirements** to support detailed design by electrical consultants.

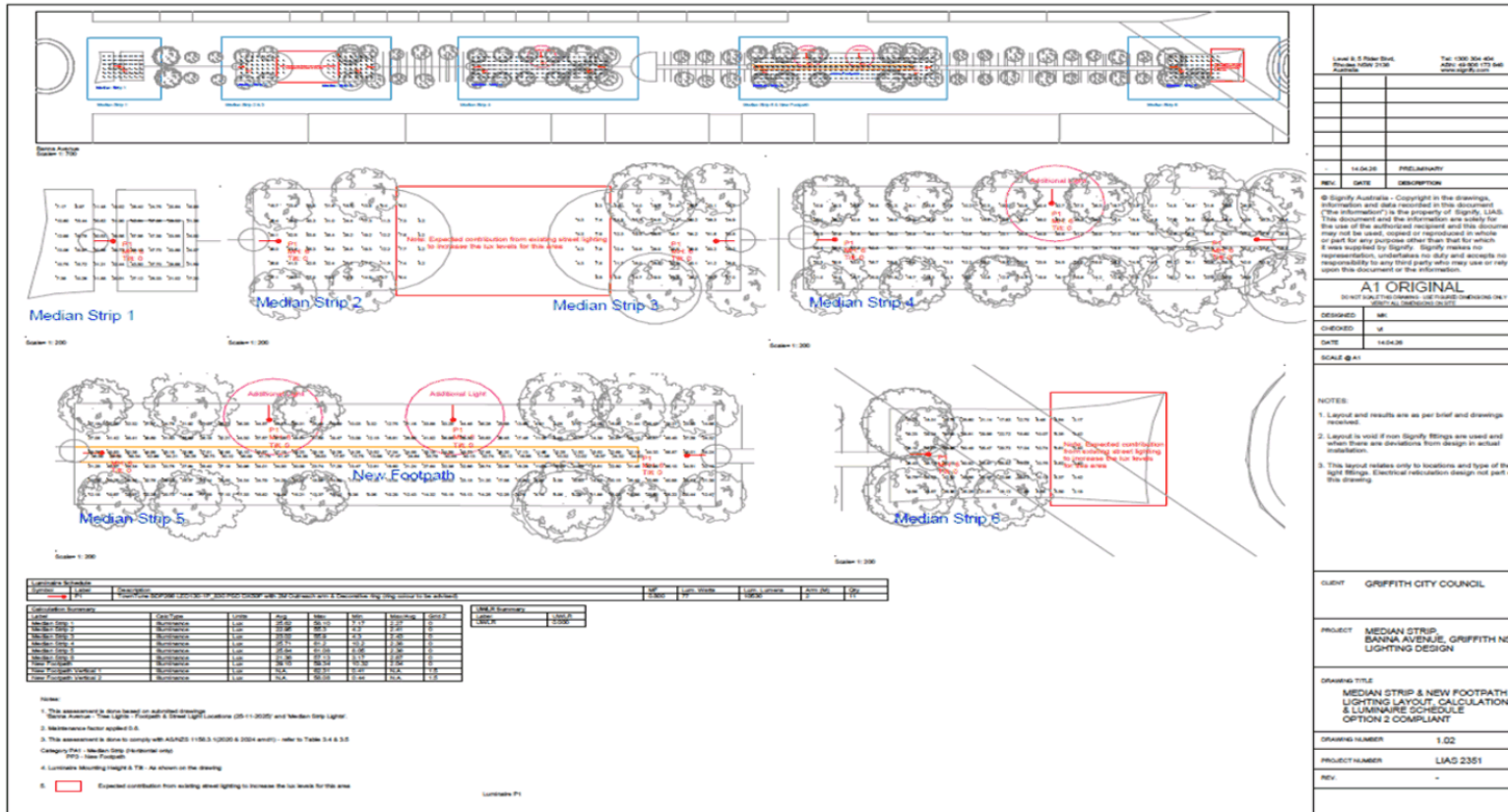
## 4. Power and Data Upgrade

- Council runs power for bollards and data cables in Banna Ave, to expand this through the medians here will give significant improvement to events e.g. Citrus Sculptures

- Additional trees with fairy lights
- Proposed new light poles.
- Proposed new concrete foot path.



# 4. Power and Data Upgrade



## 4. 1 Public Consultation Feedback

### Key Takeaways

- **Generally supported** as important enabling infrastructure
- Recognised benefits:
  - Supports **events and activation** (e.g. Citrus Sculptures)
  - Enhances **functionality of the CBD**
- Additional suggestions:
  - Improve **accessibility** (e.g. seating, mobility considerations)
  - Enable broader uses such as **audio systems and event infrastructure**
- Concerns include:
  - **Cost and overall necessity**
  - Competing priorities, particularly **maintenance and other infrastructure needs**

### Overall:

Viewed as a **valuable, future-focused investment**, provided it delivers **clear practical benefits and value for money**.

## 4.1 Public Consultation Feedback

### Current Action

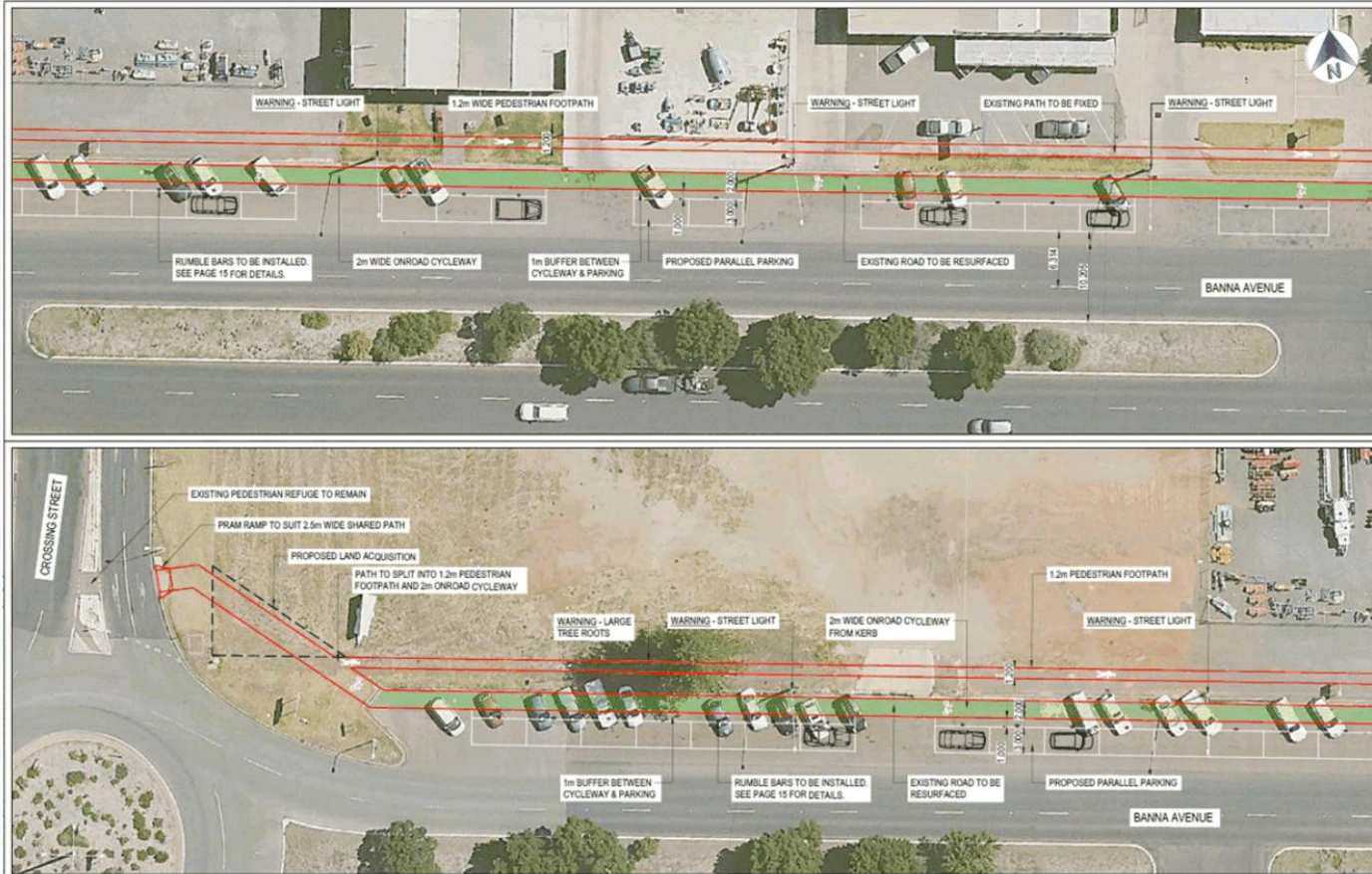
- **Internal consultation completed with:**
  - Urban Design, Governance, IT, Visitor Centre, and Water & Sewer teams
- **Actions taken:**
  - Received a Lighting design by *Signify (Philips)* to align with **Yambil Street and Kooyoo Street standards**
  - Received technical information regarding the load and specification requirements for the fairy light trees.
  - Engage *Delta Star Designs (David Briddle)* for electrical design (previously involved in Kooyoo Street)
  - Request quote from electrical designers for:
    - **Detailed electrical design**
    - **Load calculations**
- **Future Actions:**
  - Submit to *Essential Energy* to:
    - Confirm **available load capacity**
    - Identify any **required network upgrades**

## 5. Shared Pedestrians Bicycle Path

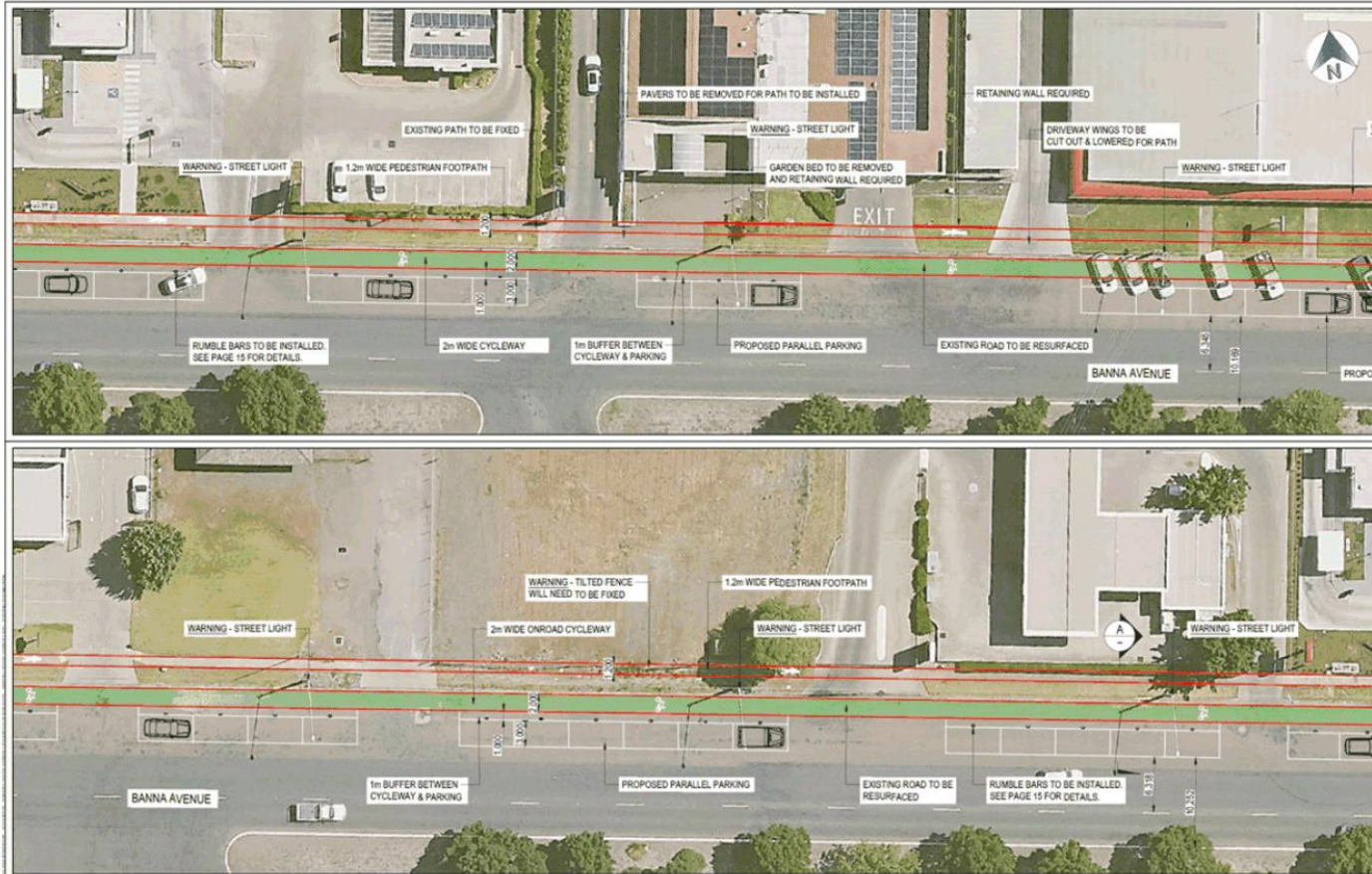
### DESIGN PROCESS AND OPTIONS

1. 4 design options for the Shared path connecting the Yoogali path with the CBD were submitted to Transport NSW as Banna Avenue is a state road.

## 5. Shared Pedestrians Bicycle Path



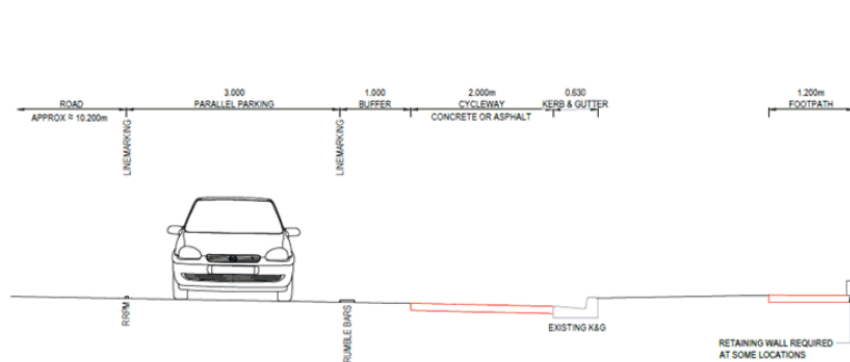
## 5. Shared Pedestrians Bicycle Path



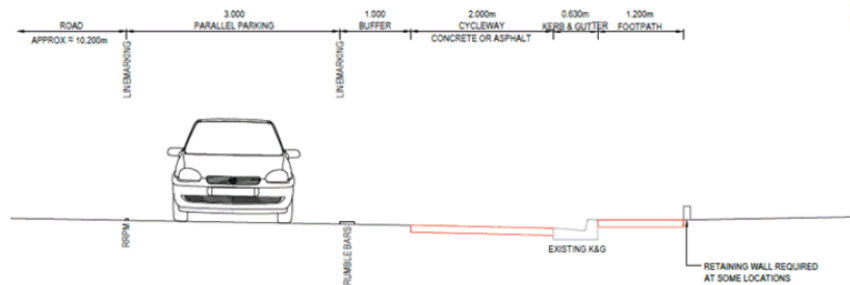
## 5. Shared Pedestrians Bicycle Path



# 5. Shared Pedestrians Bicycle Path



OPTION 2A - TYPICAL SECTION A



OPTION 2A - TYPICAL SECTION B

**ADVANTAGES**

- CLEAR DELINEATION BETWEEN PATHS AND ROAD
- LOW MAINTENANCE
- SEPARATION OF PEDESTRIANS AND CYCLISTS

**DISADVANTAGES**

- CHANGE AND LOSS IN PARKING ARRANGEMENTS
- LARGER SCOPE OF WORKS THAN OTHER OPTIONS
- POOR SIGHT DISTANCE OF PEDESTRIAN FOOTPATH FOR VEHICLES EXITING DRIVEWAYS (OBSTRUCTION BY BOUNDARY FENCING)
- POOR SIGHT DISTANCE OF CYCLEWAY FOR VEHICLES ENTERING DRIVEWAYS (OBSTRUCTION BY PARKED VEHICLES)
- EXCESSIVE PAVEMENT MARKING REQUIRED
- FOOTPATH CROSSFALL MAY NOT MEET AUSTRALIAN STANDARDS AS EXCESSIVELY STEEP IN SOME LOCATIONS
- ADDITIONAL ASSOCIATED COSTS OF RETAINING WALLS

## 5. Shared Pedestrians Bicycle Path

### DESIGN PROCESS AND OPTIONS

1. 4 design options for the Shared path connecting the Yoogali path with the CBD were submitted to Transport NSW as Banna Avenue is a state road.
2. The selected option was discussed at the last Roads, Parks & Pathways Enhancement Committee Meeting and recommended to Council to be endorsed for public consultation.
3. Public Consultation with Business and Land Owners has commenced is almost completed.

## 5. 1 Public Consultation Feedback

### Preliminary Takeaways

- **Concerns about lost number of parking spaces.**
- **Concerned about the safety entering and exiting driveways.**
- **Additional suggestions:**
  - Move the bike lane to the front of the existing parking.
  - Mirror Wyangan Avenue bike lanes
  - One way bike lanes with bikes to ride the same direction as the traffic.

### **Overall:**

Resistant to the changes.

## 6. Tree maintenance and Surrounds

CURRENT STATE OF TREE SURROUNDS - Eye sore and trip hazards.



## 6. Tree maintenance and Surrounds

Proposed solution: Resin Permeable Bonded Gravel



## PUBLIC CONSULTATION SUMMARY

### 1. Roundabout and Median Strip beautification

- The community supports **simple, low-height, and maintainable planting**, suitable for the climate, with a strong emphasis on **safety and ongoing upkeep over complex design**. Preference for natives and drought-tolerant planting

### 2. Memorial gardens entrance

- The proposal lacks support, with a clear preference for investment in park maintenance and enhancements rather than a new structure. Preference for shade sails at stage.

### 3. Modification of and additional tree lighting (Banna)

- Tree lighting is positively received, with clear expectations around maintenance, cost justification, and prioritisation.

### 4. Power and Data Upgrades

- Viewed as a valuable, future-focused investment, provided it delivers clear practical benefits and value for money.

## PUBLIC CONSULTATION SUMMARY

### 5. Shared pathway

- Resistant to the changes.

### 6. Tree maintenance and surrounds

- Council is looking at different practical options.

### 7. Replacement of banners

- Part of an internal process driven by Griffith City Council tourism.

### 8. Irrigation

- Maintenance and upgrades as needed.

# CBE ENHANCEMENT PROJECT

## Target Dates

ACTION		TARGET DATES	STATUS	REVISED TARGET DATES
1	Define scope of deliverables to RPPEC	25-Sep-25	✓	
2	Concept designs to RPPEC	26-Nov-25	✓	
3	Council to endorse concept designs for public exhibition	9 December 2025 Council Meeting	✓	
4	Exhibition Period	Extended to end February 2026	✓	
5	RPPEC meeting to consider submissions and 60% complete designs based on submissions received for recommendation to Council	Apr-26		June / July 2026
6	RPPEC Minutes to Council	May-26		July 2026
7	Detailed design for construction	Jun-26		Jul-26
8	Obtain Quotations and engage contractors	TBC		TBC
9	Project Completion	Dec-27		Dec-27



**QUESTIONS**



49