

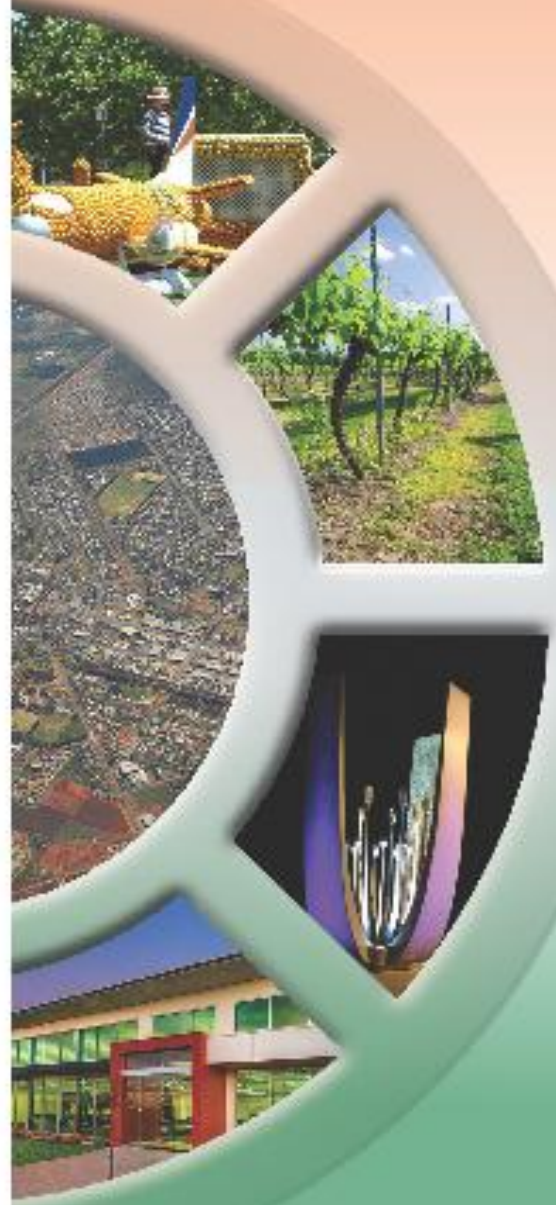


Ordinary Meeting

Tuesday, 14 April 2026

ATTACHMENTS UNDER SEPARATE COVER

- CL01 Section 7.12 Contributions Plan**
- CL02 Active Regional Community Package -
Community Participation Scheme**
- Minutes of the Roads, Parks & Pathways Enhancement
Committee Meeting held on 30 March 2026**
- Minutes of the Disability Inclusion & Access Committee
Meeting held on 1 April 2026**



ATTACHMENTS UNDER SEPARATE COVER

	Page
CL01 Section 7.12 Contributions Plan	
(a) Draft Section 7.12 Contributions Plan.....	3
(b) Submissions 1-4 - Draft Section 7.12 Contributions Plan.....	36
CL02 Active Regional Community Package - Community Participation Scheme	
(a) Community Gardens Masterplan	40
Minutes of the Roads, Parks & Pathways Enhancement Committee Meeting held on 30 March 2026	
(a) Banna Avenue Shared Path	67
Minutes of the Disability Inclusion & Access Committee Meeting held on 1 April 2026	
(a) Disability Inclusion Action Plan 2026-2030	71



Section 7.12 Contributions Plan

[INSERT DATE ENDORSED BY COUNCIL]

GRIFFITH CITY COUNCIL

1 BENEREMBAH STREET, GRIFFITH NSW 2680

Griffith City Council acknowledges the Wiradjuri people as the traditional owners and custodians of the land and waters, and their deep knowledge embedded within the Aboriginal community. Council further pays respect to the local Wiradjuri Elders, past, present and those emerging, for whom we acknowledge have responsibilities for the continuation of cultural, spiritual and educational practices of the local Wiradjuri people

Griffith City Council ABN 81 274 100 792

Sustainable Development

1 Benerembah Street (PO Box 485) GRIFFITH NSW 2680

T: (02) 6962 8100 F: (02) 6962 7161 E: admin@griffith.nsw.gov.au

Contents

Definitions 4

1 Executive Summary 5

 1.1 Introduction 5

 1.2 Section 7.12 Contributions 5

 1.3 Legislative Principles 6

 1.4 Levy Rates 7

 1.5 Content that Must be Included in a Contributions Plan 7

2 Background 9

 2.1 Griffith 9

 2.2 Assumptions 10

 2.3 Demand Assessment 10

 2.4 Infrastructure 11

 2.5 Section 7.12 Contributions 12

3 Administration and Operation of the Plan 13

 3.1 Name of this Plan 13

 3.2 Commencement of this Plan 13

 3.3 Legislative Framework 13

 3.4 Purpose of the Plan 13

 3.5 Application of this Plan 14

 3.6 Operation of the Plan 14

 3.7 Savings and Transitional Arrangements 14

 3.8 Ministerial Direction 14

 3.9 Planning Agreements 15

 3.10 Maximum Allowable Contributions 16

 3.11 Calculations of Contributions under this Plan 16

 3.12 Indexation 16

 3.13 Timing of Payment 17

 3.14 Deferred or Periodic Payments 18

 3.15 Determination of the Cost of Development 19

 3.16 Are there any exemptions to the levy 19

 3.17 Payment Methods 20

 3.18 Refunds 20

 3.19 Registered Certifiers – Complying Development Certificate 20

 3.20 Registered Certifiers – EP&A Act Part 6 Certificates 21

4 Expenditure, Accounting and Review 22

 4.1 Expenditure 22

 4.2 Pooling of Levies 22

 4.3 Accounting and Accountability 22

 4.4 Review of the Plan 23

Definitions

Acronym/Term	Definition
Applicant	person, company or organisation submitting a development application or an application for a complying development certificate or a person, company or organisation authorised to act on a consent.
Application	Development Application or Complying Development Certificate.
CDC	Complying Development Certificate.
Council	Griffith City Council
CPI	Consumer Price Index, All Groups Sydney (Series ID A2325806K) as published by the Australian Bureau of Statistics (ABS).
DA	means a Development Application.
DPHI	NSW Department of Planning, Housing and Infrastructure.
EP&A Act	Environmental Planning and Assessment Act 1979.
EP&A Regulation	Environmental Planning and Assessment Regulation 2021.
LGA	Local Government Area.
Plan	means this Section 7.12 Contributions Plan.
Registered Certifier	means a person who is registered under the <i>Building and Development Certifiers Act 2018</i> and who is acting in respect of matters to which the registration applies.
Secondary Dwelling	Has the same meaning as in the Griffith Local Environmental Plan 2014
SEPP	Means a State Environmental Planning Policy
VPA	Means a Planning Agreement under Section 7.4 of the EP&A Act

1 Executive Summary

1.1 Introduction

Griffith is the regional centre of the Western Riverina, a diverse and rich agricultural region of New South Wales, boasting major industries of rice, cotton, poultry, almonds, wine grapes, cereal production, manufacturing, agriculture, construction and food processing. The key industries in Griffith are supported by sound transport infrastructure and a diverse skills base drawn from a population that has grown over recent decades. Griffith also has a youthful and culturally diverse population. With a range of choices in education, including university pathways and a cosmopolitan lifestyle, underpinned by vibrant arts, fine dining, boutique shopping and abundant sporting and leisure activities, Griffith has much to offer its residents and visitors.

The Griffith City Council Local Government Area has a current estimated resident population of around 27,000 persons. Griffith's population is projected to reach around 34,500 by 2046 – an increase of over 7,300 people – growing at an average rate of 1%. This growth is largely driven by net overseas migration and natural increases, with new residents also relocating from other parts of Australia in search of a more affordable and well-connected regional lifestyle. While growth has slowed in recent years, partly due to housing shortages, forecasts indicate a continued upward trend. To keep pace, Griffith will need to provide a diverse and adequate supply of housing to meet the needs of both current residents – including those who are unhoused or seeking more sustainable options – and new arrivals.

Providing good-quality, well-planned infrastructure to meet the current and future population needs is essential for delivering well-designed communities. This contributions plan applies to the entire Griffith Local Government Area and allows Council and registered certifiers to levy a contribution towards the cost of providing local infrastructure on new development.

1.2 Section 7.12 Contributions

Section 7.12 of the *Environmental Planning and Assessment Act 1979* allows councils and certifiers to impose a condition requiring a contribution towards the provision, extension or augmentation of public amenities or public services, or the recoupment of these costs.

The primary purpose of this Contributions Plan is to satisfy the requirements of the *Environmental Planning and Assessment Act 1979* ("EP&A Act") and the *Environmental Planning and Assessment Regulation 2000* ("EP&A Regulation") to enable Council and Certifiers to apply a condition of consent requiring payment of a contribution towards the cost of or towards the recoupment of the cost of the provision, extension or augmentation of public amenities, public services and infrastructure that will, or are likely to be, or that have been provided and are required to adequately serve the people of the Griffith community.

Contributions levied under Section 7.12 are calculated by multiplying the proposed cost of carrying out the development by the applicable levy percentage rate. Where a contribution is payable in respect of a development, a condition will be included in the development consent or Complying Development Certificate.

1.3 Legislative Principles

The following principles form the legislative basis for the collection of monetary contributions for development under the EP&A Act.

Table 1: Legislative Requirements for Section 7.12 Contributions Plan

Legislative Requirements	Reference	Addressed in this Plan
Council can charge a Section 7.12 levy as a condition of consent if it is authorised by a contributions plan.	7.12 (1) EPA& Act	Whole Plan
Contributions can be collected under a Section 7.12 plan to provide local infrastructure or recoup the cost of infrastructure already provided.	7.12 (3) EP&A Act	Whole Plan
The infrastructure must be provided in a reasonable time	7.3 (1) EP&A Act	See Appendix A
A Section 7.12 plan must demonstrate the relationship between the expected types of development in the area to which the plan applies, and the demand for additional local infrastructure.	212 (c) EP&A Regulation	See Section 2.
However, the condition imposed under Section 7.12 does not require a direct link between the development and the local infrastructure that the contribution will be spent on.	7.12 (4) EP&A Act	Noted
A condition under Section 7.12 cannot be appealed if it is made in accordance with an approved plan.	7.13 (4) EP&A Act	Noted

1.4 Levy Rates

In accordance with Clause 209(2) of the EP&A Regulation 2021, the contribution amount payable will be calculated based on the proposed cost of carrying out the development and the applicable levy rate, as shown in

Table 2: Section 7.12 Applicable Levy Rate

Proposed Cost of Carrying out the development	Levy rate
Up to and including \$100,000	Nil
\$100,001 to \$300,000	0.1%-1% (refer to Section 3.11 for calculation requirements)
Over \$300,000	1%

1.5 Content that Must be Included in a Contributions Plan

Content of a Section 7.12 plan	Legislation	Section of the Plan Addressed
The purpose of the plan	212(1)(a) EP&A Regulation	See Section 3.4
The land to which the plan applies	212(1)(b) EP&A Regulation	See Section 3.5
The development to which the plan applies and the relationship between the expected types of development and the demand for additional infrastructure	212(1)(c) EP&A Regulation	See Section 2 for infrastructure demand and Section 3 for development to which the plan applies.
A map showing the specific public amenities and services proposed	212(1)(f) EP&A Regulation	See Appendix C
A works schedule that contains an estimate of the costs and staging	212(1)(g) EP&A Regulation	See Appendix A
The priorities for the expenditure if pooling and progressively applying funds	212(1)(h) EP&A Regulation	See Appendix A and Section 4.2

Content of a Section 7.12 plan	Legislation	Section of the Plan Addressed
The percentage of the development levy for each type of development	212(2)(a) EP&A Regulation	See Section 1.4
How the cost of development will be indexed from the granting of consent to when the levy is paid	212(2)(b) EP&A Regulation	See Section 3.12
The timing of payment and the policy on considering deferred or periodic payments	212(3) EP&A Regulation	See Section 3.13
A section specifying the type of development or area that the plan applies to, and that it precludes a Section 7.11 condition from being applied to that same type or area	7.18(2) EP&A Act	See Section 3.8 and Section 3.16
Information for registered certifiers about when a contribution is required for complying development certificates and how the amount can be obtained	7.21 EP&A Act	See Sections 3.19 and 3.20

2 Background

2.1 Griffith

Griffith is the regional centre of Western Riverina, a diverse and rich agricultural region of New South Wales, boasting major industries of rice, cotton, poultry, almonds, wine grapes, cereal production, manufacturing and food processing.

The key industries in Griffith are supported by sound transport infrastructure and a diverse skills base drawn from a population that has grown over recent decades. Griffith also has a youthful, culturally diverse population, reflected in an energetic retail and service sector. With a range of educational options, including University pathways, and a cosmopolitan lifestyle, underpinned by vibrant arts, fine dining, boutique shopping, and abundant sporting and leisure activities, Griffith has much to offer its residents.

Griffith is strategically located about 470km west of Sydney and almost 300km north-west of Canberra, covering a land area of 1,640km². It is a key connection point for the Riverina Murray region, linking central NSW, Sydney, Canberra, and South Australia. As one of the four major regional cities in the Riverina Murray Basin, Griffith offers essential higher-order services, such as business, retail, arts, culture, and recreation, to smaller settlements across the region.

The region's housing demand is driven not only by its growing permanent population but also by seasonal and temporary workforces linked to agriculture and major infrastructure projects. This includes large-scale projects like the Griffith Base Hospital redevelopment, which will provide expanded healthcare services and support the growing demand for housing and accommodation.

Griffith's role as a regional transport hub is vital to its continued growth and economic stability. The city is well connected by air, rail, and road, and is identified in the NSW Future Transport Strategy as a critical regional node with key transport links to South Australia. This infrastructure is crucial for supporting the region's industries, including agriculture and freight, and enhancing the mobility of Griffith's residents and workers.

Griffith's health and education sectors also contribute to its regional importance. The city is a regional hub for healthcare, with facilities like Griffith Base Hospital, Griffith Community Health Centre, and St Vincent's Private Hospital serving the local community and surrounding areas. The Riverina Murray Regional Plan recognises Griffith as a hub for both health and education, with plans for expanding healthcare precincts and associated services around the hospital sites.

2.2 Assumptions

The following assumptions have been made to provide a base for the calculations and assessments for this Plan.

- Griffith's population will continue to increase at about 1% per annum;
- The dwelling occupancy rate will remain higher than the state average but will continue to reduce over time, consistent with national trends;
- The diverse cultural mix of the region will continue to be consistent with past trends; and
- The community's expectations as identified in Council's Community Strategic Plan (We are Griffith) will remain stable for the life of the plan.

Should any of these assumptions not eventuate, future reviews of this Plan will need to make appropriate variations or amendments to the Schedule of Works (Appendix A) to accommodate those changes. It should be noted in particular that changes to legislation and technological advances may significantly affect the base assumptions of this plan, thereby increasing or decreasing the costs of providing infrastructure.

2.3 Demand Assessment

Council has prepared and is in the process of preparing a series of Strategic Plans that identify existing conditions and anticipated future demands for housing, employment lands, public facilities and services. These strategic plans will be reviewed or amended from time to time to ensure they continue to meet the community's expectations and needs.

Each Strategic Plan provides an assessment of demographic changes, associated increases in demand, and locations for future public facilities and services. Each plan has or will be exhibited for community input prior to adoption by Council.

The strategic plans that this Plan relies on include, but are not limited to, the following:

- Griffith Community Strategy Plan 2025
- Griffith Land Use Strategy Beyond 2030 (2013)
- Griffith Local Strategic Planning Statement 2020
- Griffith Housing Strategy 2026
- Griffith Employment Lands Strategy 2024
- Griffith Health Precinct Master Plan 2022

The growth area master plans, prepared by Council, which will guide the development of key growth areas containing over 3000 new residential lots, include:

- Collina Growth Areas Master Plan 2008
- Lake Wyangan Growth Areas Master Plan and Section 7.11 Contribution Plan – 2023
- Hanwood Growth Area Master Plan (draft-expecting endorsement in early 2026)
- Yenda Growth Area Master Plan 2025

2.4 Infrastructure

Infrastructure is key to community livability and helps create vibrant places. To support our existing and growing communities, it is essential to ensure that infrastructure is properly planned, funded, and delivered on time. This will ease pressure on current infrastructure and ensure that the increased demand caused by population growth is adequately met.

This Plan recognises that community growth and cultural change create a need for community infrastructure, including roads, drainage, social, cultural, recreational, and other infrastructure. Some of this need can be satisfied by the imposition of conditions on development, such as subdivision of land. However, some items may not be directly attributable to any one development or may be of such a magnitude that the cost could not be carried by any one development.

In preparing this plan, the Council has been mindful to ensure that the works proposed are necessary to serve the growing community of Griffith and could not reasonably be provided within the constraints of the Council's financial plan. In general, projects included in this Plan are required to meet expected future or known shortfalls or increases in demand for those facilities or services within the Griffith LGA.

The types of infrastructure that are considered local 'public amenities and services' (or local infrastructure) for this contributions plan include:

- Open Space and Recreation - parks, passive recreational spaces, reserves and sports fields.
- Community Facilities - libraries, community centres, cultural facilities, public art and other places used for the physical, social, cultural or intellectual development or welfare of the community.
- Transport - roads, intersections, bridges, active transport (footpaths and cycleways), public transport.
- Stormwater Management - detention basins, drainage channels, WSUD measures and other necessary drainage works.
- Plan administration - direct staff costs (planning and finance), planning studies.

The types of infrastructure that are not considered part of this Plan include utilities (water, wastewater, gas, and electricity) and regional or state infrastructure (e.g., schools and hospitals).

There are many ways infrastructure can be funded, including general revenue, grants, and infrastructure contributions made by developers, also known as Development Contributions.

2.5 Section 7.12 Contributions

Section 7.12(1) of the EP&A Act allows a consent authority to impose a condition of consent requiring the applicant to pay a monetary contribution towards infrastructure. Contributions levied under Section 7.12 are calculated based on the proposed cost of the development, multiplied by the applicable levy percentage rate. The contribution amount payable is specified in the development consent or complying development certificate and is subject to indexation until the payment is made. The Section 7.12 contributions collected help fund, in whole or in part, public infrastructure as outlined in Appendix A. The Schedule of Works in Appendix A is subject to review and change as part of the annual budget operational plan process, which is reported on and endorsed through council meetings. Council, at its discretion, may amend this Plan at any time, including reviewing and amending the Schedule of Works.

3 Administration and Operation of the Plan

3.1 Name of this Plan

This Plan replaces all previous plans and policies relating to or providing for the levying and collection of contributions for community services, open space, recreation facilities, roads and car parking facilities (other than those Section 7.11 or former Section 94 Plans which remain in operation). It does not, and is not intended, to remove Council's option to negotiate a Planning Agreement with a developer under the provisions of the EP&A Act. This Plan is to be known as: **Griffith City Council Section 7.12 Contributions Plan**.

3.2 Commencement of this Plan

The former Griffith City Council 94A Contributions Plan first became effective on 1 July 2010 and was later amended in January 2013, and the amendments became effective on 15 March 2013.

This plan review became effective on [insert date plan is endorsed and becomes effective].

3.3 Legislative Framework

This Plan levied contributions under Section 7.12 of the EP&A Act, which provides that:

7.12 Fixed development consent levies

(1) A consent authority may impose, as a condition of development consent, a requirement that the applicant pay a levy of the percentage, authorised by a contributions plan, of the proposed cost of carrying out the development.

This Plan has been prepared in accordance with the provisions of the EP&A Act, EP&A Regulation, Ministerial Directions, and the Local Infrastructure Contributions Practice Notes.

3.4 Purpose of the Plan

The primary purpose of this Contributions Plan is to satisfy the requirements of the *Environmental Planning and Assessment Act 1979* ("EP&A Act") and the *Environmental Planning and Assessment Regulation 2000* ("EP&A Regulation") to enable Council to apply a condition of consent requiring payment of a contribution towards the cost of or towards the recoupment of the cost of the provision, extension or augmentation of public amenities, public services and infrastructure that will, or are likely to be, or that have been provided and are required to serve the people of the Griffith community adequately.

The Plan estimates the collection of around \$20,000,000 over roughly 20 years. These funds are considered vital for providing infrastructure to support the growing community.

Overall, the purpose of this plan is to:

- Authorise Council, a registered certifier or other consent authority to impose conditions under Section 7.12 of the EP&A Act when determining an application on land to which this Plan applies.
- Provide a framework for the equitable calculation, collection, and management of contributions.
- Ensure that each development makes a reasonable contribution towards the provision of infrastructure.
- Assist the Council to provide the appropriate public facilities that are required to maintain and enhance amenity and service delivery within the area.
- Ensure Council's management of development contributions complies with relevant legislation and guidelines.

3.5 Application of this Plan

This plan applies to the whole of the LGA of Griffith City (See **Appendix C** for a map of the LGA). Upon commencement of this Plan, Council may not impose a condition pursuant to Section 7.12 of the EP&A Act in respect of any development affected by this Plan.

3.6 Operation of the Plan

When assessing a development application, Council will impose a condition that requires payment of a contribution in accordance with this Plan. Similarly, when assessing an application for a complying development certificate, the Council or the registered certifier will impose a condition requiring payment of a contribution in accordance with this Plan.

This Plan applies to applications for development consent and complying development certificate applications under Part 4 of the EP&A Act, determined on or after the commencement of this Plan.

Contributions paid to Council will be held in a restricted asset account and allocated to infrastructure projects during the annual budget preparation process.

3.7 Savings and Transitional Arrangements

The Contribution Plan in force at the time an application is determined (not lodged or submitted) will apply. An application that is modified will continue to be levied in accordance with the Plan that applied at the date of original determination.

3.8 Ministerial Direction

A Direction issued by the NSW Minister for Planning under Section 7.17 of the EP&A Act will prevail over the provisions of this Plan. The Ministerial Directions relative to this Plan include:

- Environmental Planning and Assessment (Local Infrastructure Contributions – Pooling of Contributions) Direction 2020
 - If a local council holds monetary contributions that have been paid for different purposes, including for purposes identified in more than one contributions plan that applies in the local government area concerned, the council is to endeavour to pool those contributions, and apply them progressively, in order to facilitate the provision of the public amenities and public services to which any of those contributions plans relate.
 - **monetary contributions** means monetary contributions imposed under Section 7.11 of the Environmental Planning and Assessment Act 1979 and levies imposed under Section 7.12 of that Act
- Environmental Planning and Assessment (Local Infrastructure Levies) Direction 2015 – issued 14 April 2016 (revokes the Direction issued on 10 November 2006)
 - If a development contribution under Section 7.11 of the EP&A Act has been required in respect of the subdivision of land (initial subdivision), a levy under Section 7.12 of the EP&A Act may not be required in respect of any other development on the land, unless that other development will, or is likely to, increase the demand for public amenities or public services beyond the increase in demand attributable to the initial subdivision.
- *Environmental Planning and Assessment Act 1979* - issued 14 September 2007
 - A contribution cannot be imposed on development for the purposes of any form of seniors housing as defined in the State Environmental Planning Policy (Housing) 2021, where the development consent is granted to a social housing provider as defined in the SEPP (Seniors Living) 2004.
- Planning Circular D6 - Crown Development Applications and conditions of consent 1995
 - Contributions levied on Crown development should be in accordance with the matrix table, which provides a guideline on appropriate categories of contributions for each Crown activity.

Further details on current Section 7.17 Directions can be found at www.planning.nsw.gov.au.

3.9 Planning Agreements

A Planning Agreement is a voluntary agreement between a planning authority and a developer, under which the developer agrees to make contributions towards a public purpose. This may include the dedication of land, a monetary contribution, any other material public benefit or a combination of these. A Planning Agreement may or may not exclude the application of Section 7.12 to the development to which the agreement applies.

The provisions of Sections 7.4 to 7.10 of the EP&A Act and Clauses 202 to 206 of the EP&A Regulation prescribe the contents, form, subject matter and procedures for making Planning Agreements. Further information can also be found in the Council's Planning Agreements Policy.

3.10 Maximum Allowable Contributions

Section 7.12 provides that the contribution imposed as a condition of consent must be a percentage of the cost of the development proposed to be carried out. The percentage of the levy is to comply with the EP&A Regulation and is to be authorised by this Plan.

The EP&A Regulation sets a maximum contribution of 1% of the cost of the development for a contributions plan for the Griffith LGA. Clause 25K states that the maximum contribution shall be:

- If the proposed cost of carrying out the development is up to and including \$100,000 – Nil
- If the proposed cost of carrying out the development is more than \$100,000 and up to and including \$200,000 – 0.5 percent of that cost
- If the proposed cost of carrying out the development is more than \$200,000 – 1.0 percent of that cost.

3.11 Calculations of Contributions under this Plan

This Plan allows Section 7.12 contributions for developments costing between \$100,000 and \$300,000 to be determined by a sliding scale. This will further lessen any adverse impacts on minor developments and low-cost housing.

For the purpose of this plan, contributions shall be calculated in accordance with the following formulae:

- For estimated development cost less than \$100,000: Nil
- For estimated development costs between \$100,000 and \$300,000, the following calculations will be used:

$$R = (C - 100)/200$$

Where

R = rate of contribution as a percent

C = estimated cost of development in \$1,000 (see Sec 7.9)

Varies from 0% to 1%

Cost of development C = \$250,000 R = (250 – 100)/200 = 0.75%.

- For estimated development cost greater than \$300,000: 1%.

3.12 Indexation

In accordance with Clause 208(5) of the EP&A Regulation, the contribution amount calculated will be subject to indexation until the date of payment. The contribution amount will be indexed

quarterly using the Consumer Price Index; All Groups, Sydney (CPI) published by the Australian Bureau of Statistics (ABS) based on the following formula:

$$\text{Contribution payable} = \$C \times (\text{CPI}_p / \text{CPI}_c)$$

Where:

- C** is the original contribution amount.
- CPI_p** is the CPI at the time of payment (or current quarter).
- CPI_c** is the CPI at the time the application was determined.

Table 3: Index Dates

Index Quarter	Index released by ABS	Effective From
March Quarter	Late April	1 May
June Quarter	Late July	1 August
September Quarter	Late October	1 November
December Quarter	Late January	1 February

To check the current indexed amount payable, please contact Council.

3.13 Timing of Payment

The timing requirements for when the contribution needs to be paid will be set out in the development consent or CDC, and will be based on the following provisions:

For development applications, the contribution is payable as follows:

- DA involving building work - before the issue of any Construction Certificate.
- DA involving subdivision only - before the issue of any Subdivision Certificate.
- DA involving both subdivision and building work - before the issue of any Construction Certificate or Subdivision Certificate, whichever occurs first.

For Complying Development Certificates, the contribution is payable as follows:

- CDC involving building work – before any building work commences.
- CDC involving subdivision only – before the issue of any Subdivision Certificate.
- CDC involving both subdivision and building work – before any building work commences or before the issue of any Subdivision Certificate, whichever occurs first.

Where a development is staged, the application may include a request for any condition requiring the payment of contributions to provide for staged payments.

Where a Ministerial Direction provides an alternative provision for the timing of contribution payment, this may override this Plan and the condition of consent.

3.14 Deferred or Periodic Payments

Council may accept deferred or periodic payment of a contribution upon written request by the applicant or any other person entitled to act upon the relevant consent.

For Development that is the subdivision of land for residential purposes:

This option is not applicable if the construction of a dwelling is included in the development application.

Council will consider deferral of payment of monetary contributions up to the settlement of sale proceeds, or 5 years from issue of a subdivision certificate, whichever is the sooner, provided that the owner enters into a Deed of Charge in a form acceptable to Council, binding the land with the obligation to repay the contributions, any indexation thereof and any interest thereon.

The Deed of Charge is to contain provisions enabling Council to register a caveat on the title of each proposed lot of the subdivision, recording Council's interest under the Deed.

The amount of the contributions is to be indexed in accordance with the Contributions Plan.

For Other Types of Development

Any deferral will generally be limited to a period of no more than 12 months, however, Council may agree to a longer period in exceptional circumstances. Periodic payment can be negotiated with Council but would normally be of equal instalments over the payment period.

Council may require the applicant to provide to Council a bank guarantee (from a bank and in a format acceptable to Council) for the payment of the outstanding amount on condition that:

- a) the guarantee requires the bank to pay the guaranteed amount unconditionally to Council where it so demands in writing, not earlier than six months (or a term determined by Council) from the provision of the guarantee or completion of the development or stage of the development to which that the contribution or part relates.
- b) the guarantee prohibits the bank from:
 - having regard to any representations made by the applicant or other person entitled to act upon the consent; and
 - having regard to any appeal, dispute, controversy, issue or other matter relating to the consent or the carrying out of development in accordance with the consent, before paying the guaranteed amount.
- c) the bank's obligations under the guarantee are discharged:
 - when payment is made to the Council according to the terms of the bank guarantee;
 - if the related consent lapses; or
 - if the Council otherwise notifies the bank in writing that the bank guarantee is no longer required.

- d) the applicant pays interest to Council on the contribution or the outstanding balance of the contribution at the overdraft rate on and from the date when the contribution would have been otherwise payable in accordance with this Plan.

3.15 Determination of the Cost of Development

The cost of a development must be determined in accordance with Section 208 of the EP&A Regulation and Section 7.12 of the EP&A Act. The Department of Planning, Housing and Infrastructure (the Department) prepares Planning Circulars to assist Applicants and Councils in ensuring the requirements of the legislation are met when submitting a development application. Planning Circular PS 21-022 - Calculating the genuine estimated cost of development was issued on 2 December 2021 and provides requirements pertaining to how the cost of a development must be quantified and prepared for submission to Council or the consent authority.

Applicants must ensure the requirements of the EP&A Regulation, EP&A Act and any applicable Planning Circular and any relevant guideline are followed in the preparation of the genuine cost of development in the submission of a development application or Complying Development Certificate application.

3.16 Are there any Exemptions to the Levy

The levy will NOT be imposed on the following developments or types of development.

- Where the cost of the proposed development, calculated in accordance with this plan, is \$100,000 or less.
- Where a new dwelling replaces an existing dwelling destroyed as a result of accidental or natural disaster, provided the new dwelling is a similar size to the dwelling it replaces (with a levy to be applied to the difference in cost attributed to the increase in building area).
- Where the development is for the purpose of disabled access.
- The construction of secondary dwellings.
- Where the development is for the sole purpose of providing 'affordable housing'.
- Where the development is for the purpose of reducing the consumption of mains-supplied potable water or reducing the energy consumption of a building.
- Where the development is for the sole purpose of the adaptive reuse of an item of environmental heritage.
- Development excluded from Section 7.12 contributions by a Ministerial Direction under Section 7.17 of the Environmental Planning and Assessment Act 1979.
- Where the development has previously been levied a contribution for the subdivision of land under Section 7.11 of the Act.
- Any other development exempted by resolution of Council (**See Appendix B**).

From time to time, Council may, by resolution, exempt a particular development or type of development from the requirement to pay a levy under this Plan.

Appendix B identifies those developments that Council has exempted from payment of levies under this Plan. The date the exemption commenced and the duration of the exemption are also indicated.

3.17 Payment Methods

In all instances, the Section 7.12 contribution will be a monetary contribution. Before arranging payment, please contact Council to check the current indexed amount payable.

The following payment methods are available:

- **Phone** – please call 1300 176 077 to pay by credit card.
- **In person** – please visit the Administration Building at 1 Benerembah Street, Griffith, to pay by cash, EFTPOS, credit card or bank cheque (personal cheques are not accepted).
- **Post** – please mail a bank cheque to PO Box 485, Griffith NSW 2680

3.18 Refunds

Requests for the full or partial refund of contributions paid will be considered in limited circumstances and must be made in accordance with the following requirements:

- The development consent or Complying Development Certificate must not have been acted on or must be formally surrendered, and
- The current landowner must submit a written request to Council.

A delegated council officer may approve requests for refunds, in part or in full, that are made in accordance with the above provisions, or in other circumstances considered reasonable.

3.19 Registered Certifiers – Complying Development Certificate

In accordance with sections 4.28(9) and 7.21 of the EP&A Act and Clause 156 of the EP&A Regulation, applications for a complying development certificate are also subject to the provisions of this Plan, and a registered certifier must impose a condition requiring the payment of a Section 7.12 contribution in accordance with the requirements of this Plan.

The condition must include the contribution amount calculated in accordance with this Plan and require payment before any building or subdivision work authorised by the certificate commences. Further information on how to calculate and condition contributions is available on Council's website. The following template condition may be used:

Development Contributions

In accordance with Section 4.28(9) of the *Environmental Planning and Assessment Act 1979* and the Section 7.12 Contribution Plan, a contribution of \$[INSERT AMOUNT], subject to indexation, must be paid to Griffith City Council before any building or subdivision work authorised by this certificate commences.

In accordance with Clause 156(2)(b) of the EP&A Regulation and the State Environmental Planning Policy (Exempt and Complying Development Codes) 2008, the applicant must provide sufficient evidence to the Certifier so that they can ensure that the contribution has been fully paid before any building or subdivision work authorised by the certificate commences.

3.20 Registered Certifiers – EP&A Act Part 6 Certificates

A registered certifier must not issue a Certificate under Part 6 of the EP&A Act where the development consent imposes a condition in accordance with this Plan unless the condition has been complied with. This applies to the following Part 6 Certificates:

- Construction Certificate
- Occupation Certificate
- Subdivision Certificate

In accordance with Clauses 20(b), 46 and 54(2)(f) of the *Environmental Planning and Assessment (Development Certification and Fire Safety) Regulation 2021*, a registered certifier must not issue a Construction Certificate, Occupation Certificate or Subdivision Certificate, unless a condition of the development consent requiring the payment of a Section 7.12 contribution has been complied with.

4 Expenditure, Accounting and Review

4.1 Expenditure

The Capital Works Program delivered by the Council is financed through a combination of funding sources, including contributions collected under this Plan. Section 7.12 Contributions will be allocated to projects via the annual budget process, based on the Works Schedule (See **Appendix A**), and will be refined as needed until the projects are delivered. This may involve reviewing projects and/or budget allocations during the budget review process, which is reported to and approved by Council.

Section 7.12 of the EP&A Act provides:

(3) Money required to be paid by a condition imposed under this section is to be applied towards the provision, extension or augmentation of public amenities or public services (or towards recouping the cost of their provision, extension or augmentation). The application of the money is subject to any relevant provisions of the contributions plan

4.2 Pooling of Levies

This Plan expressly authorises monetary levies paid pursuant to this Plan or other contributions plans to be pooled and applied progressively for any works included in the Schedule of Works to this Plan, provided that the Council is satisfied that the pooling and progressive application of the money paid will not unreasonably prejudice the carrying into effect within a reasonable time of the purposes for which the money was originally paid.

4.3 Accounting and Accountability

Council has established a register of contributions as required under Clauses 217-220 of the EP&A Regulation.

In particular, the register will include the following information for any development that has a condition of consent requiring the payment of a contribution under this Plan:

- a) particulars sufficient to identify each development consent for which any such condition has been imposed;
- b) the nature and extent of the Section 7.12 levy under this Plan required by any such condition;
- c) the contributions plan (this Plan) under which any such condition was imposed; and
- d) the date or dates on which any Section 7.12 levy required by any such condition was received, and its nature and extent.

Funds received under this Plan will be recorded in Council's accounting records as required under Clause 35 EP&A Regulation. As a minimum, Council's records will identify the following;

- a) the kinds of public amenities or services for which expenditure is authorised under the Plan;
- b) funds received over each financial year;
- c) funds allocated to items on the Schedule of Works, whether those funds have been expended and/ or the works have been completed;
- d) any pooling of funds in accordance with **Section 4.2** of this Plan; and
- e) interest earned (or loss) on any funds invested under this Plan.

Council's Annual Report will include a statement of all fund movements under this plan as required by Clause 36 EP&A Regulation.

The following information will be held in a format that can be made available to the public on request, as required by the EP&A Regulation:

- a copy of this Plan;
- a copy of its Annual Statements and Annual Report; and
- details from the register of contributions made under this Plan.

4.4 Review of the Plan

Council will review this Plan every 10 years to ensure that it remains consistent with the community's expectations and that the Schedule of Works can be achieved within a reasonable period of time.

If appropriate, Council may lower or vary the percentage of the development cost used to determine contributions required under this Plan or repeal this Plan and adopt a new plan to address changed circumstances. In any case where a new plan is prepared, Council will exhibit the plan and consider submissions before implementation of the new plan.

APPENDIX A – SCHEDULE OF WORKS

The works listed in this schedule are to be funded from a mix of sources, including Section 7.12 funds. **Table 4** below is a list of priority projects to be funded, in whole or in part, by Section 7.12 levies. The location of these projects is provided in **Appendix C**.

Approximate time scales for priority ratings are as follows:

- High - within 5 years of adoption of the plan
- Medium - from 6 to 10 years from the adoption of plan
- Low - from 11 to 15 years from the adoption of plan

To assess the anticipated income to be received by Council under this Plan, a review was undertaken of development consents granted over the ten years from 1 July 2015 to 1 July 2025. Over the 10-year period, a total of \$9,797,793 was paid to Council, averaging around \$979,779 per year. Based on an expected population growth rate of 1% per year, an average of \$1 million of Section 7.12 contributions per year are expected to be levied over a 20-year planning horizon, equating to an estimated \$20 million. As is evident from the Schedule of Works Table Below, the projects identified exceed the expected 7.12 Contributions to be received by Council.

Council may choose to utilise funding from alternative sources to either supplement or replace funding under this plan. Council will actively seek grant funding from State and Federal governments to assist in the delivery of these priority projects.

Table 4 - 7.12 Contributions Plan - Schedule of Works

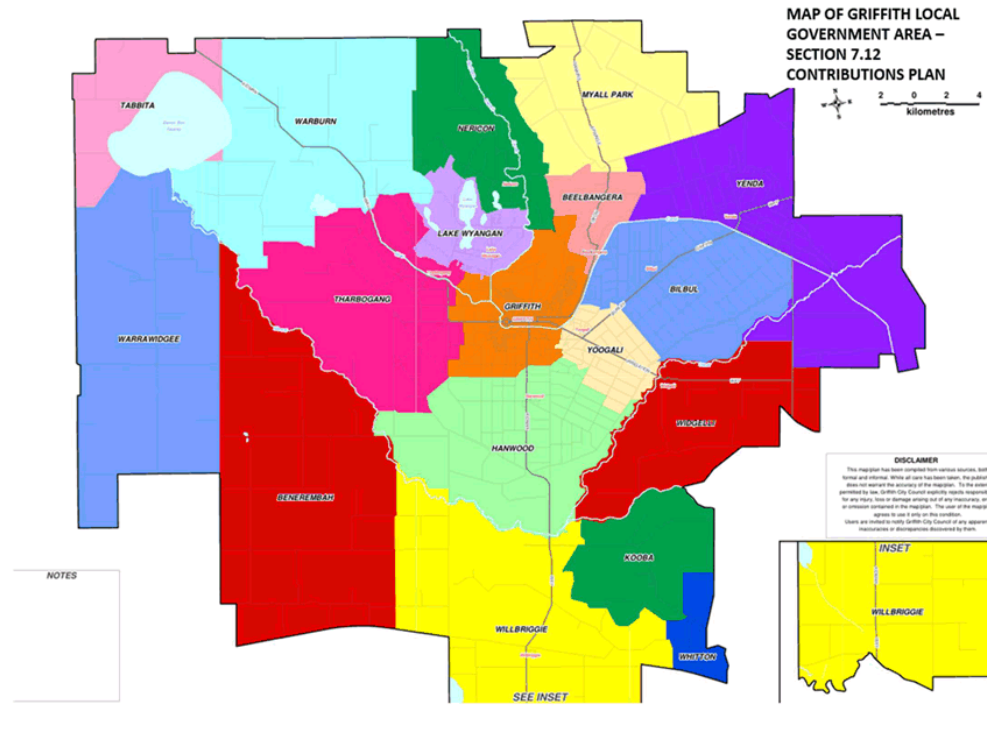
Project No.	Description of Project	Estimated Cost for Project	Funds Allocated		
			High Priority – 2025 to 2030	Medium Priority – 2031 to 2035	Low Priority – 2036 to 2045
1	CBD Upgrade	\$10,000,000	\$3,500,000	\$3,500,000	\$3,000,000
2	Scenic Hill – Pathways/Hermits Cave - Elevated Platform	\$990,000		\$990,000	
3	Yambil St Extension - Masterplan	\$35,000,000			\$35,000,000
4	Clifton Boulevard Extension	\$5,000,000	\$3,000,000	\$2,000,000	
5	Lake Wyangan Infrastructure	\$935,000	\$935,000		
6	Airport Terminal Extension	\$2,065,000	\$2,065,000		
7	Wood Park Toilets	\$144,200	\$144,200		
8	Pool – Solar Panels	\$2,077,040	\$434,500	\$1,642,540	
9	Tharbogang Toilets	144,200	\$144,200		
10	Airport – Airside plane parking	\$500,000	\$500,000		
11	Community Gardens - Fence	\$250,000		\$250,000	
12	PAMP Projects – (Top Ten projects on list)	\$375,307	\$173,640	\$201,666	

Project No.	Description of Project	Estimated Cost for Project	Funds Allocated			
14	Playground equipment - General	\$1,262,021	\$458,134	\$803,887		
15	Playground equipment – City Park	\$206,600	\$103,300	\$103,300		
16	Pathway – West End Oval to Jubilee Oval	\$390,000		\$390,000		
17	Pioneer Park – new building	\$1,050,000			\$1,050,000	
18	Sergi Park – off-leash/dog park	\$500,000			\$500,000	
19	Aerodrome carpark expansion	\$300,000			\$300,000	
20	Cultural Precinct Masterplan Implementation	\$3,000,000			\$3,000,000	
21	Water feature – Yenda	\$120,000			\$120,000	
22	Lake Wyangan Water Quality Program	\$3,000,000	\$1,000,000	\$1,000,000	\$1,000,000	
TOTAL		\$56,560,307				

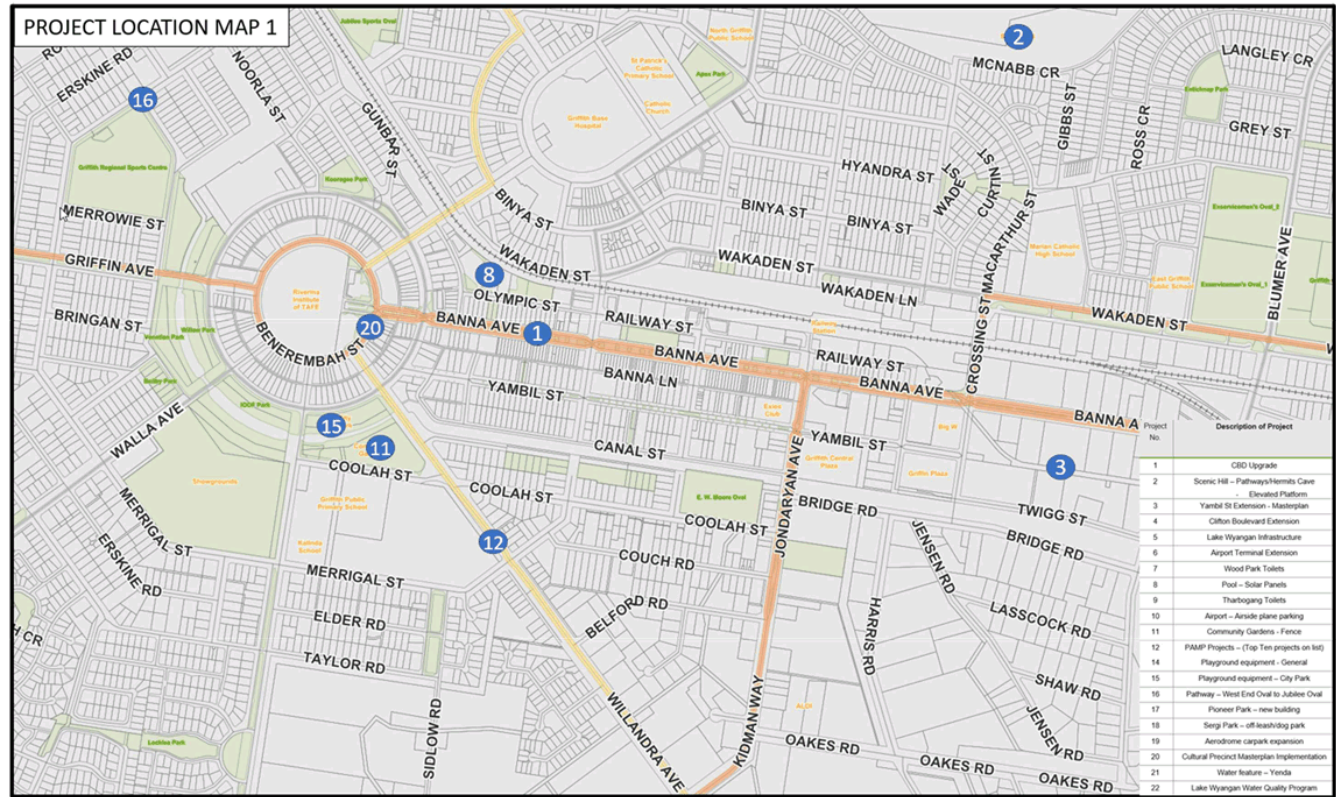
APPENDIX B – EXEMPTIONS

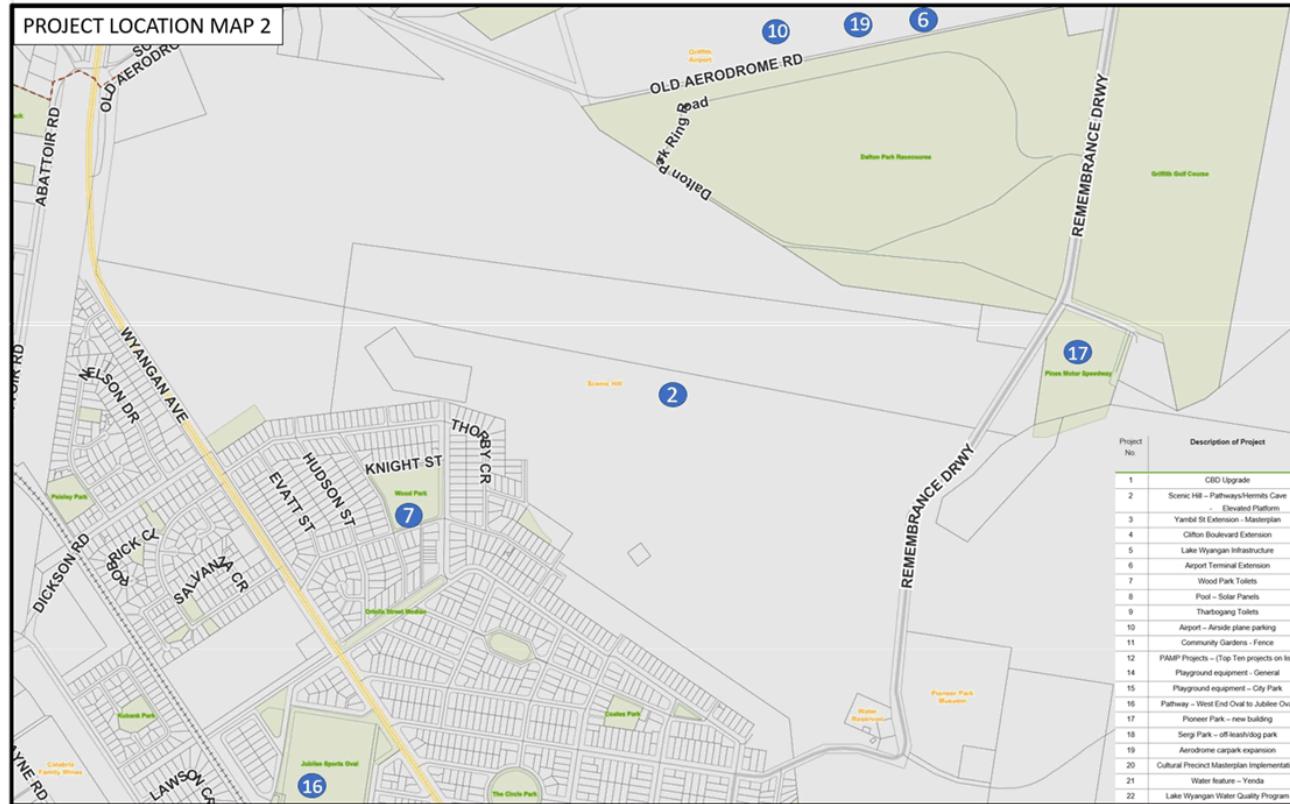
Type of Development	Date Exemption Commenced	Date Exemption Ceases
Development undertaken by or on behalf of Griffith City Council for the purpose of providing public or community amenities, including facilities utilising levies under this Plan	Commencement of this Plan	None
Development for conservation or enhancement of vegetation where that development is undertaken in conformity with Council's Environmental Enhancement Strategy	From the date of adoption of the Environmental Enhancement Strategy	None
Development proposing renewable energy or other measures to increase the sustainability of a building or use on the same site or adjoining or adjacent site, including co-located solar panels or other electricity-generating works with industrial or commercial development or employment-generating uses.	Commencement of this Plan	None
All exemptions listed in Section 3.16 of this Plan	Commencement of this Plan	None

APPENDIX C – MAP OF LOCAL GOVERNMENT AREA AND LOCATION OF PROJECTS

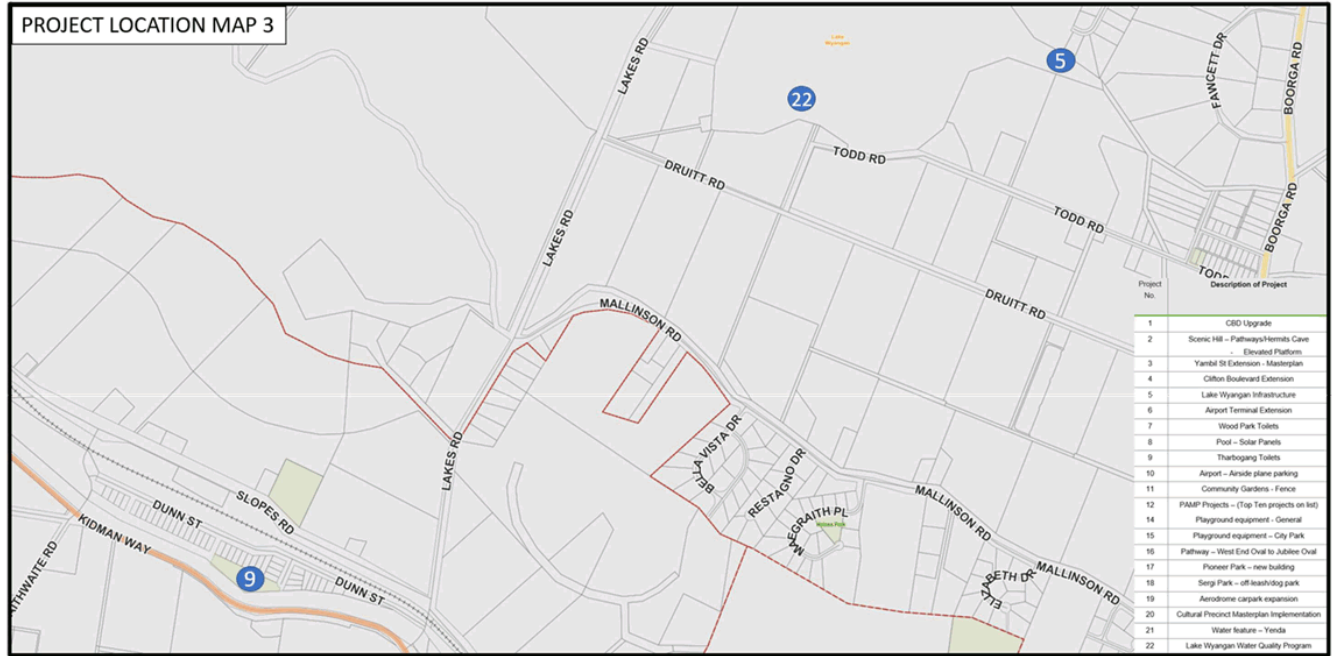


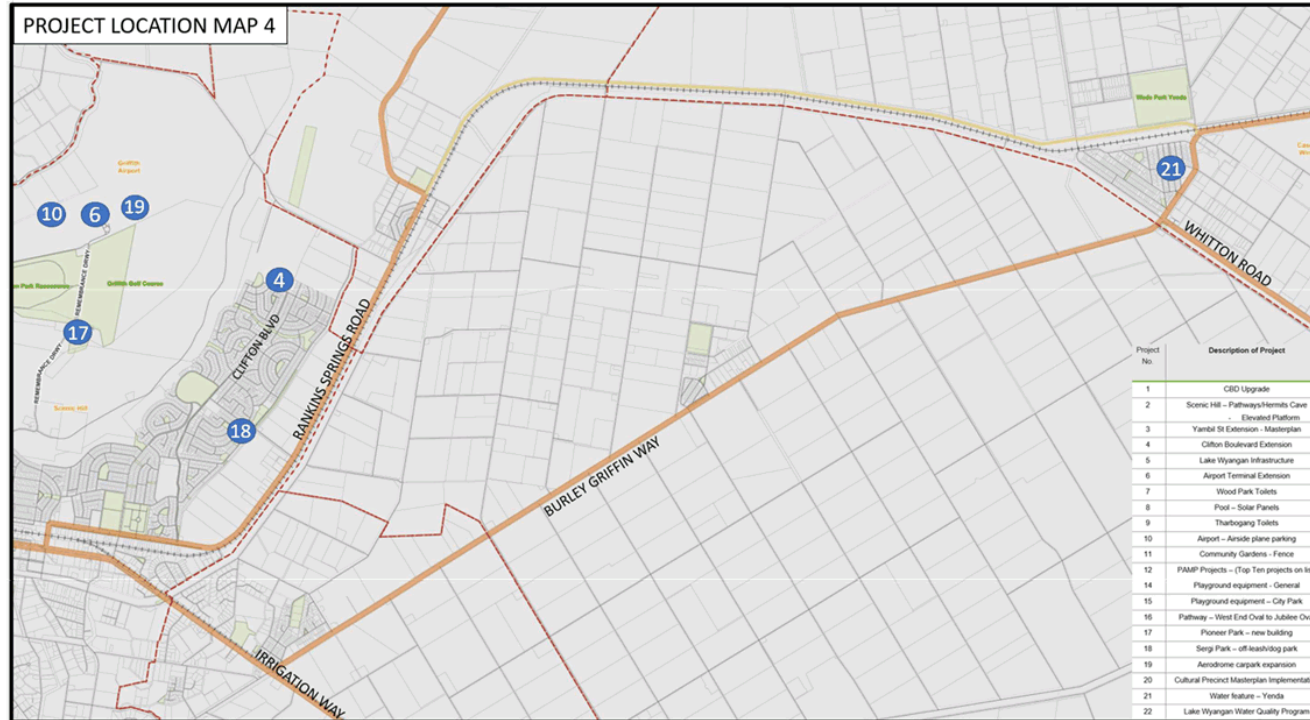
Note: These maps are indicative only to show a general location of the intended infrastructure.





Griffith Section 7.12 Contribution Plan





[REDACTED]

From: Connect @ Griffith City Council <admin@griffith.nsw.gov.au>
Sent: Monday, 29 December 2025 5:49 AM
To: GCC Admin Mailbox; Communications; WorkGroup-UrbanDesign
Subject: Anonymous User completed Draft Section 7.12 Contributions Plan

Anonymous User just submitted the survey Draft Section 7.12 Contributions Plan with the responses below.

Name

[REDACTED]

Email

[REDACTED]

Would you like your details withheld?

Yes

Have your say here

On two occasions, the percentage was written incorrectly and a contribution fee was invoiced at \$42,000 instead of \$4000. With these mistakes, someone who doesn't check thoroughly or understand this fee, council stands to make a huge profit. I wonder how many other mistakes like these have happened? This contribution fee is wrong and another way to halt development in Griffith.

From: Connect @ Griffith City Council <admin@griffith.nsw.gov.au>
Sent: Saturday, 27 December 2025 7:14 PM
To: GCC Admin Mailbox; Communications; WorkGroup-UrbanDesign
Subject: Anonymous User completed Draft Section 7.12 Contributions Plan

Anonymous User just submitted the survey Draft Section 7.12 Contributions Plan with the responses below.

Name

Melissa

Would you like your details withheld?

Have your say here

Please plant more native gums in safe spaces. Potentially turn retention basins into mini ecosystems full of trees with no grass. need to water in the long term and provides nature space for play and enjoyment

From: Connect @ Griffith City Council <admin@griffith.nsw.gov.au>
Sent: Monday, 1 February 2023 12:5 PM
To: GCC Admin Mailbox; Communications; WorkGroup-UrbanDesign
Subject: Anonymous User completed Draft Section 7.12 Contributions Plan

Anonymous User just submitted the survey Draft Section 7.12 Contributions Plan with the responses below.

Name

[REDACTED]

Email

[REDACTED]

Would you like your details withheld?

Yes

Have your say here

It is recommended that Council consolidate the Cultural Precinct Masterplan implementation and the proposed new building at Griffith Pioneer Park Museum into a single, prioritised Scenic Hill Cultural Tourism sub project. The Scenic Hill precinct already includes Scenic Hill, Hermits Cave and Griffith Water Tower. A shared, modern facility incorporating exhibition space, compliant collections storage, cafe restaurant and function capacity would create a destination level tourism anchor and strengthen the Tourist Trail experience. By delivering this as an integrated precinct project rather than separate upgrades, Council can achieve greater economic, cultural and community benefit, increase visitor dwell time, and leverage external funding more competitively. Levating this project within the S7.12 Contributions Plan would position Griffith to deliver transformational regional infrastructure aligned with population growth and long term tourism development.

load your attachment

https://s3-ap-southeast-2.amazonaws.com/eh_production/australia_e0e_bdb2abd_edd4f322_7deb_d_a_e_f4e_original_177120_32_2b_e_b1f014_Concept_20Plan.doc?177120_32

From: Connect @ Griffith City Council <admin@griffith.nsw.gov.au>
Sent: Sunday, 1 March 2022 11:01 AM
To: GCC Admin Mailbox; Communications; WorkGroup-UrbanDesign
Subject: Anonymous User completed Draft Section 7.12 Contributions Plan

Anonymous User just submitted the survey Draft Section 7.12 Contributions Plan with the responses below.

Name

Would you like your details withheld?

o

Have your say here

i our town and make it better lake Wyangan should be a primary focus with our town or e ample fi the place young family's are restricted here as there are limited things or place to take there children 1 play ground at our lake is a fantastic improvement but please put a gate around it especially so young children don't wander off. 2. i fi fi our lake I cannot believe how terrible our lake looks. I feel like no one cares about this and it seems to much of a head ache for council and they are just ignoring the problem. ere are just a few ideas of how to make the great again and give our young local family's something to look forward too. g splash park, slide park, light up fountains in the lake, with coloured lights walk path or walk track, cabins and a caravan park, add more wild life back eg kangaroos and peacocks, restaurants with a high up view on the lake, a new massive boat club with a big brand new pation, fish and chips shop, ice cream shop and steam boats paddle boats and the fishing area,a man made beach with sand and massive infrastructure of housing along the lake with a view sort of like murwala our town has so much potential but it seems it lacks commonsense or no one could be bothered because it's such a big task. 3. i our infrastructure and housing issues we would like to see our town grow not be restricted, it's really sad to see that most children familes move away from Griffith as there really isn't much here for them to stay. ow about we fi the flights first of all how terrible is it that if you want to fly in or out of costs over 4 0 to 00 dollars now that uite e pensive for anyone who wants to come to our town or anyone who needs to go to the city. Can we fi this issue please lam sure Their is some solution. 4. We have a beautiful hospital but we can't see to retain staff eg doctors surely there are reasons behind this ? .i feel most shops are closing up town and it would be lovely to try and find more shops to open here and more support for locals . ow about we see what most people are really wanting and needing ? . It would be lovely to also see our town grow at a better speed and attract a better population? Maybe we need to see what Wagga Wagga is doing to grow its town because at this stage our town seems to be reducing it potentially and Wagga Wagga seems to be attracting it.



COMMUNITY GARDENS

LARGE SCALE EVENTS DRAFT MASTERPLAN

1

Current Available Budget

Total \$43,500.00

Resolution from Council Meeting held on 14 November 2023

CL 5

b) Council include event infrastructure (subject to Masterplan) to the \$50,000 to 2024/25 draft budget to improve amenities at Community Gardens for significant events.

2

Staged Master Plan components

1. Fencing
2. Ambulance and emergency services access
3. Internal Service access
4. Lighting
5. Power pillars and site layout for food vendors
6. Possible enlargement of the viewing area at the stage
7. Backstage hardstand layout with change facilities
8. Dealing with the sun and providing more shade options
9. Better access to the existing toilets during festivals
10. New components
11. Flagpole

The following groups were consulted during the preliminary Masterplan Draft Process:

INTERNAL STAKEHOLDERS

Directorate Economic and Organisational Development

Sustainable Development

Urban Design

Tourism

Theatre Staff

Parks and Gardens

Christmas by Candlelight

EXTERNAL STAKEHOLDERS AND CONSULTANTS

Ambulance and emergency services

Food vendors

Lighting and sound specialist

Shade specialists

Electricians

Quotes for various components

Fencing Selection



Diplomat Style Fencing

- ▶ • 720 meter x 1.8 meters high
- ▶ • 3 Pedestrian Entrance Gates (+ 2 Internal Pedestrian Gates) Depending on the option selected.
- ▶ • 5 Vehicle Service Gates

4

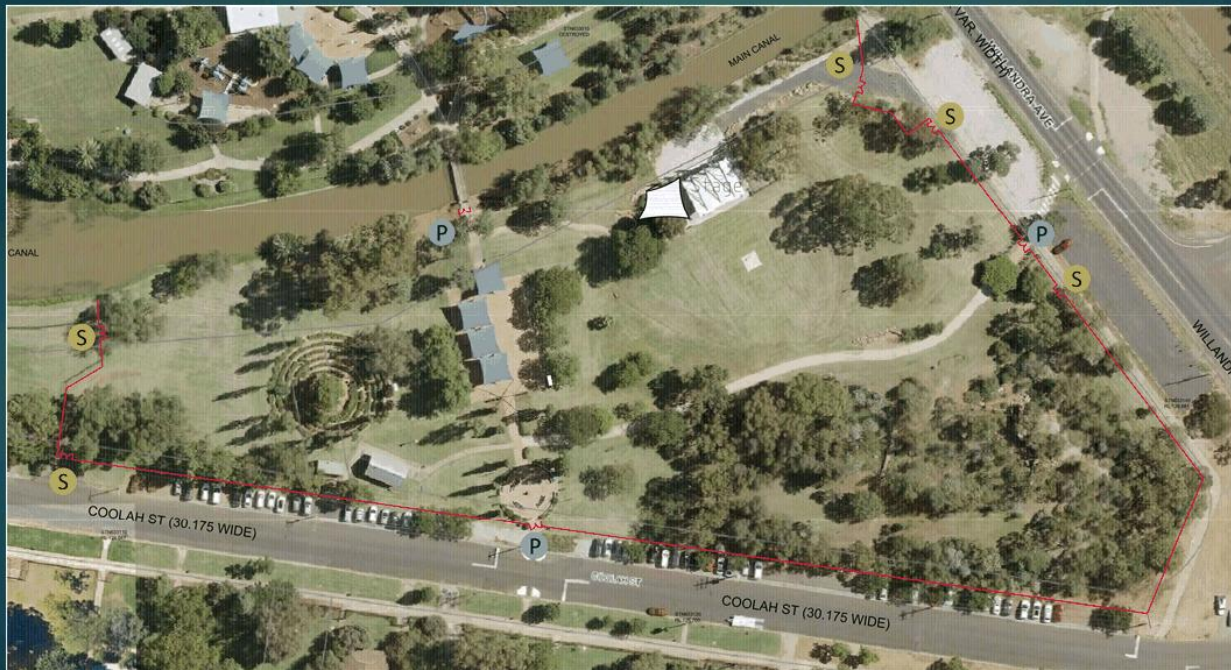
Fencing Option A



- LEGEND:**
- S Service Entrance
 - P Pedestrian Entrance
 - A Ambulance Parking
 - T First Aid Tent
 - E Electrical Pillar
 - L Light Bollard
 - F Food Truck
 - M Food / Market Tent
 - G Green Room
 - S Shade Tree
 - S Removable Shade Sail

5

Fencing Option B



- LEGEND:**
- S Service Entrance
 - P Pedestrian Entrance
 - A Ambulance Parking
 - First Aid Tent
 - Electrical Pillar
 - Light Bollard
 - Food Truck
 - Food / Market Tent
 - Green Room
 - Shade Tree
 - Removable Shade Sail

6

Emergency Services



- LEGEND:**
- S Service Entrance
 - P Pedestrian Entrance
 - A Ambulance Parking
 - A First Aid Tent
 - P Electrical Pillar
 - S Light Bollard
 - A Food Truck
 - A Food / Market Tent
 - G Green Room
 - S Shade Tree
 - A Removable Shade Sail

7

Services Road



- LEGEND:**
- S Service Entrance
 - P Pedestrian Entrance
 - A Ambulance Parking
 - First Aid Tent
 - Electrical Pillar
 - Light Bollard
 - Food Truck
 - Food / Market Tent
 - Green Room
 - Shade Tree
 - Removable Shade Sail

8

Electrical Supply


Titan 200NB

Material Steel – 200NB (219.1) x 4.8mm pipe
Stainless Steel – 200NB (219.0) x 3.76mm pipe


Finish Steel - Electrostatically powder coated or hot dipped galvanised
Stainless steel – Linished or electro-polished

Leda power bollards are designed for use with Clipsal 56 Series switch gear. Electrical installation must be carried out by a licensed electrical contractor to comply with SAA wiring rules (AS3000) and any additional requirements of statutory authorities.

- Lockable and secure
- Power and / or water outlets
- Designed for use in remote areas
- Safe

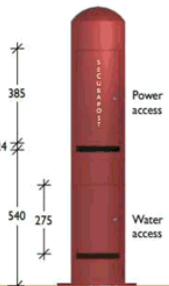


Single door
Steel
TPB103B
Stainless Steel
STPB103B



1115


Double Door
Steel
TPB120B
Stainless Steel
STPB120B



385
24
540
275

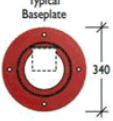
Power access
Water access

Typical
Side View



Supplied with galvanised pre-punched mounting plates to take 2, 4, 6 & 8 standard mounting enclosures.

Typical Baseplate



340

electrical service

Electrical Pillars

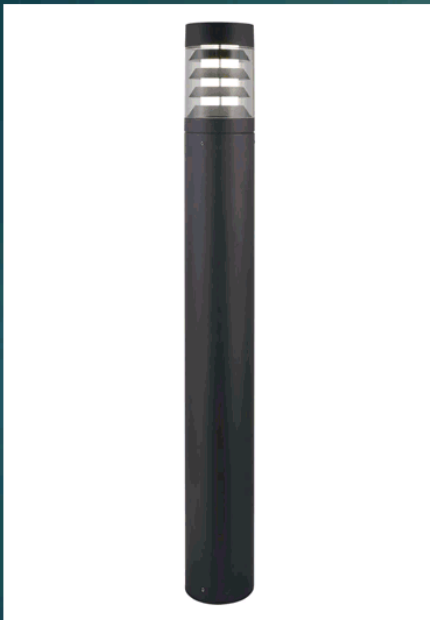


LEGEND:

S	Service Entrance
P	Pedestrian Entrance
A	Ambulance Parking
□	First Aid Tent
●	Electrical Pillar
●	Light Bollard
■	Food Truck
■	Food / Market Tent
■	Green Room
●	Shade Tree
■	Removable Shade Sail

10

Lighting



This is a commercial grade vandal proof bollard light with excellent dusk to dawn lighting. It is suitable for all locations including parks, walkways, beaches, homes and commercial premises. This is a premium product with moulded impact-proof aluminium housing that is rated IK10 for impact resistance, and is IP65 which means it is weatherproof. This product can withstand almost anything man or nature can throw at it.

NOTE: this bollard comes with a bottom baseplate for surface mounting on concrete.

TYPE: Commercial Grade Bollard Light - Vandal Proof Impact Resistant
APPLICATIONS: Parks, paths, tracks, gardens and driveways - all residential and commercial premises
COLOUR: Black
WARRANTY: 3 years
IP RATING: IP65 (weatherproof)
IK RATING: IK10 (impact proof to 10kg hammer being slammed down from 40cm height)
COMPLIANCE: Australian compliant
MATERIAL: Impact proof aluminium
COLOUR TEMP: 3000K / 4000K (selected by switch)
LUMENS: 780 lm warm white / 870 lm cool white
GLOBE TYPE: LED (fixed LED chips)
DIMMABLE: No
HEIGHT: 1000mm
DIAMETER: 168mm
WATTAGE: 25W
MOUNTING: Surface mounted
LIFESPAN: 50,000 hours
WORKING TEMP: -20° to 45°
VOLTAGE: 240V



11

Light Bollards



- LEGEND:**
- S Service Entrance
 - P Pedestrian Entrance
 - A Ambulance Parking
 - First Aid Tent
 - Electrical Pillar
 - Light Bollard
 - ▭ Food Truck
 - ▭ Food / Market Tent
 - ▭ Green Room
 - Shade Tree
 - ▭ Removable Shade Sail

Food Vendors



- LEGEND:**
- S Service Entrance
 - P Pedestrian Entrance
 - A Ambulance Parking
 - First Aid Tent
 - Electrical Pillar
 - Light Bollard
 - Food Truck
 - Food / Market Tent
 - Green Room
 - Shade Tree
 - Removable Shade Sail

Raised Viewing and removal of embankment



- LEGEND:**
- S Service Entrance
 - P Pedestrian Entrance
 - A Ambulance Parking
 - First Aid Tent
 - Electrical Pillar
 - Light Bollard
 - Food Truck
 - Food / Market Tent
 - Green Room
 - Shade Tree
 - Removable Shade Sails

Shading Options: Trees



Shademaster Honeylocust

- ▶ • Deciduous
- ▶ • 12 – 15 Meters High
- ▶ • A great, stunning feature tree. It can also be used in parks and gardens as it is a great filtered shade tree. •



15

Shading Options: Trees



- LEGEND:**
- S Service Entrance
 - P Pedestrian Entrance
 - A Ambulance Parking
 - F First Aid Tent
 - E Electrical Pillar
 - L Light Bollard
 - FT Food Truck
 - FMT Food / Market Tent
 - GR Green Room
 - ST Shade Tree
 - RSS Removable Shade Sail

Shading Options: Shade Sails



Removable Sails – Parkes
Shire Council

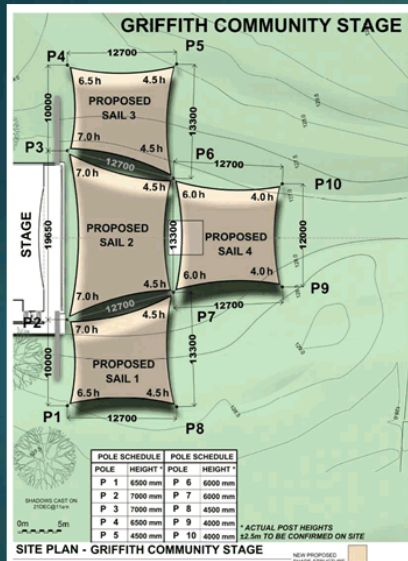
SHADESPAN



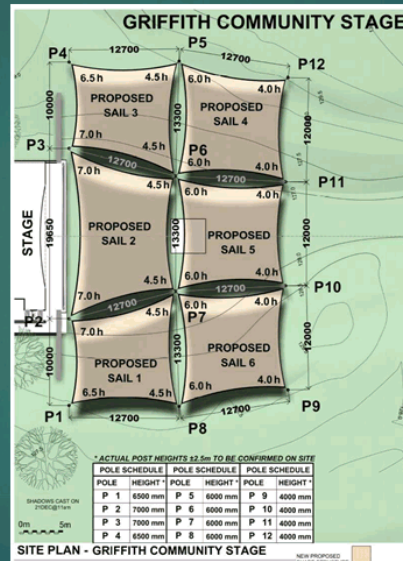
Received 3 design
options from
Engineers

17

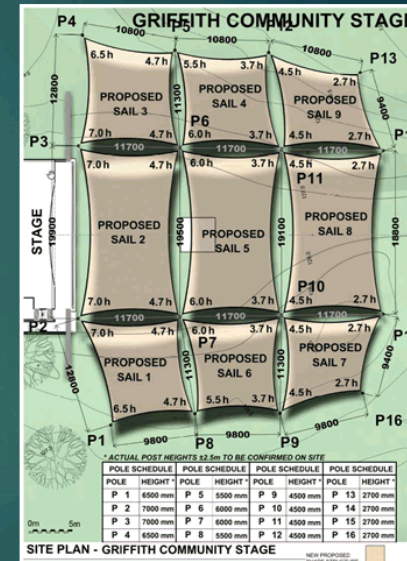
Option 1



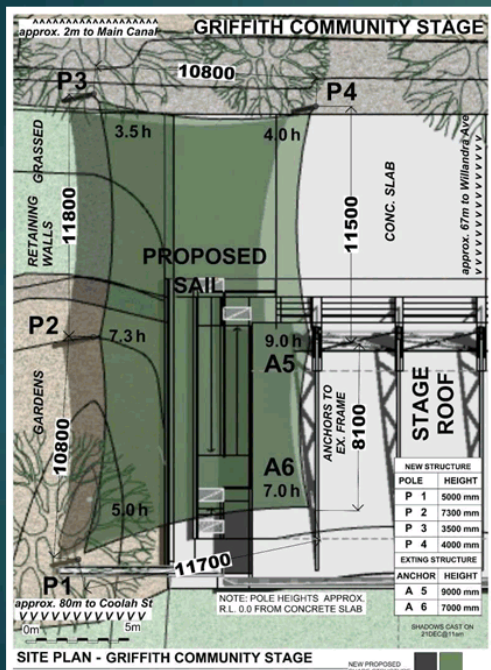
Option 2



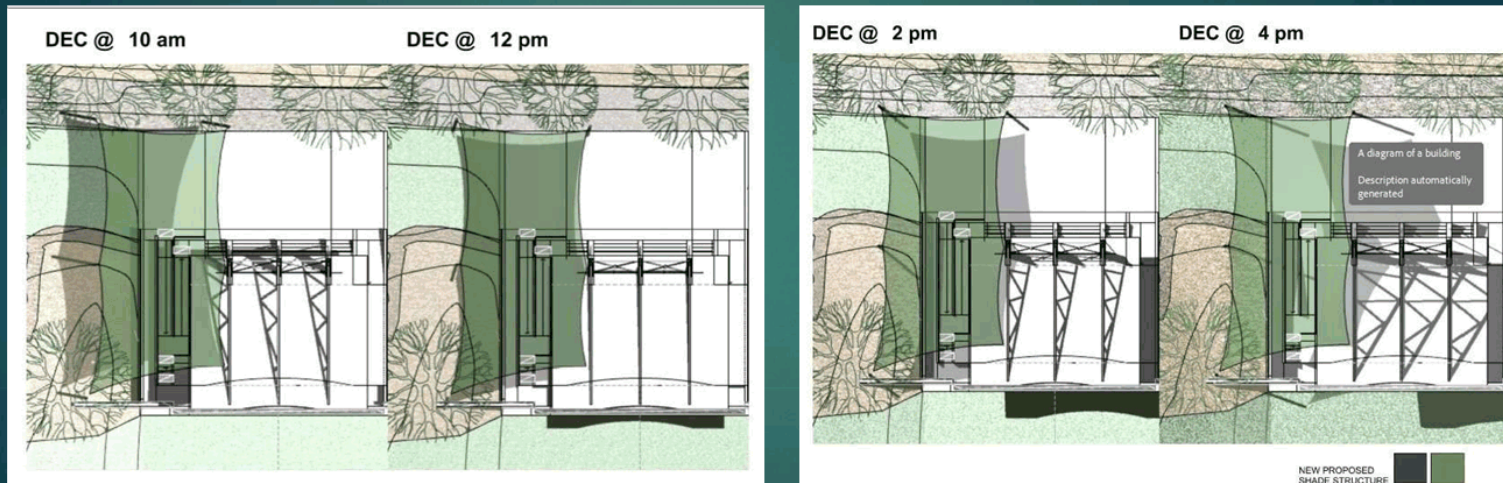
Option 3



Stage Shade Sail



Stage Shade Sail



20

Option : 1



- LEGEND:**
- S Service Entrance
 - P Pedestrian Entrance
 - A Ambulance Parking
 - First Aid Tent
 - Electrical Pillar
 - Light Bollard
 - Food Truck
 - Food / Market Tent
 - Green Room
 - Shade Tree
 - Removable Shade Sail

Option : 2



- LEGEND:**
- S Service Entrance
 - P Pedestrian Entrance
 - A Ambulance Parking
 - P First Aid Tent
 - Electrical Pillar
 - Light Bollard
 - Food Truck
 - Food / Market Tent
 - G Green Room
 - Shade Tree
 - Removable Shade Sail

Option : 3



- LEGEND:**
- S Service Entrance
 - P Pedestrian Entrance
 - A Ambulance Parking
 - A First Aid Tent
 - A Electrical Pillar
 - A Light Bollard
 - A Food Truck
 - A Food / Market Tent
 - A Green Room
 - A Shade Tree
 - A Removable Shade Sail

Behind Stage : Stage 1



24

Option 4 and Change Rooms:

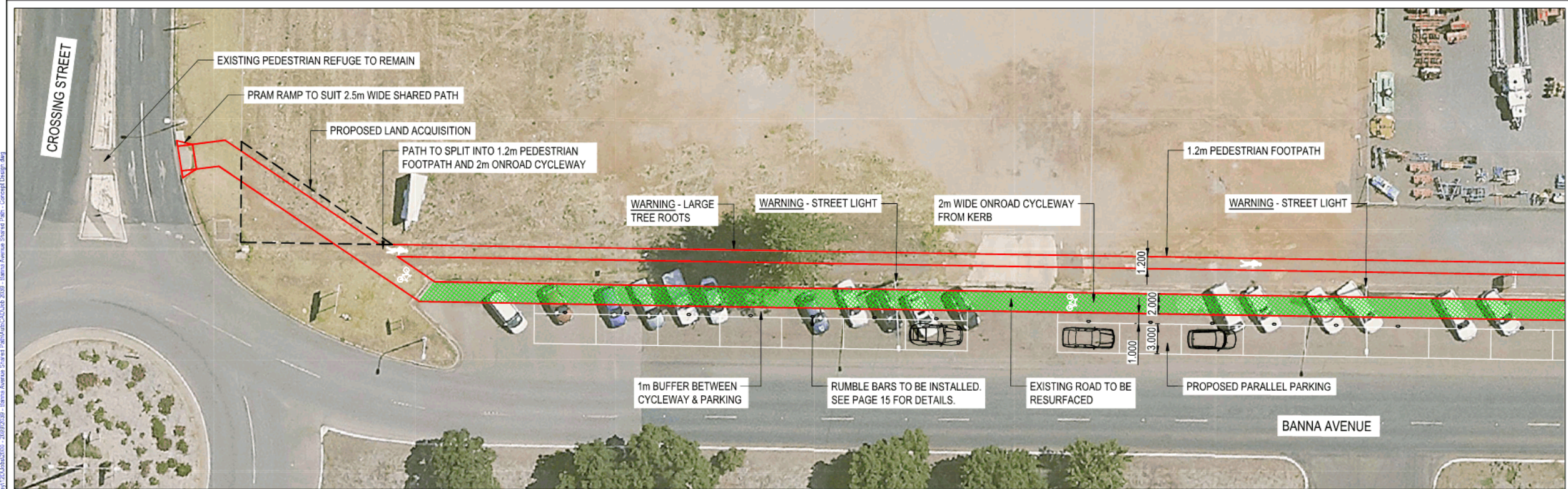
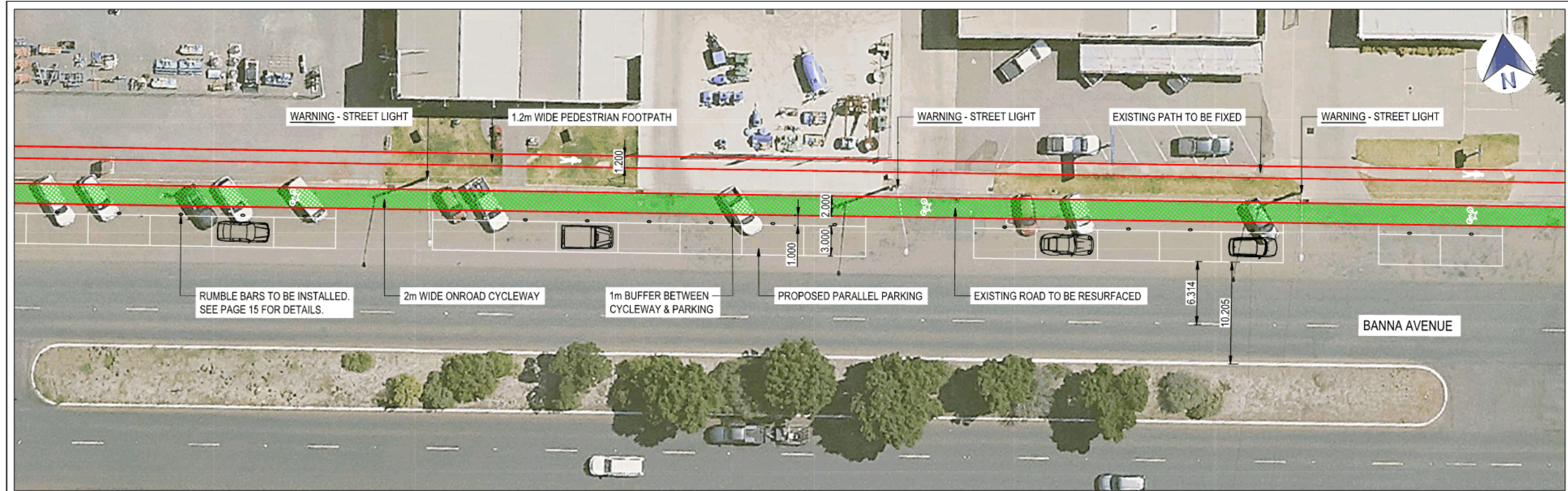


- LEGEND:**
- S Service Entrance
 - P Pedestrian Entrance
 - A Ambulance Parking
 - First Aid Tent
 - Electrical Pillar
 - Light Bollard
 - Food Truck
 - Food / Market Tent
 - Green Room
 - Shade Tree
 - Removable Shade Sail

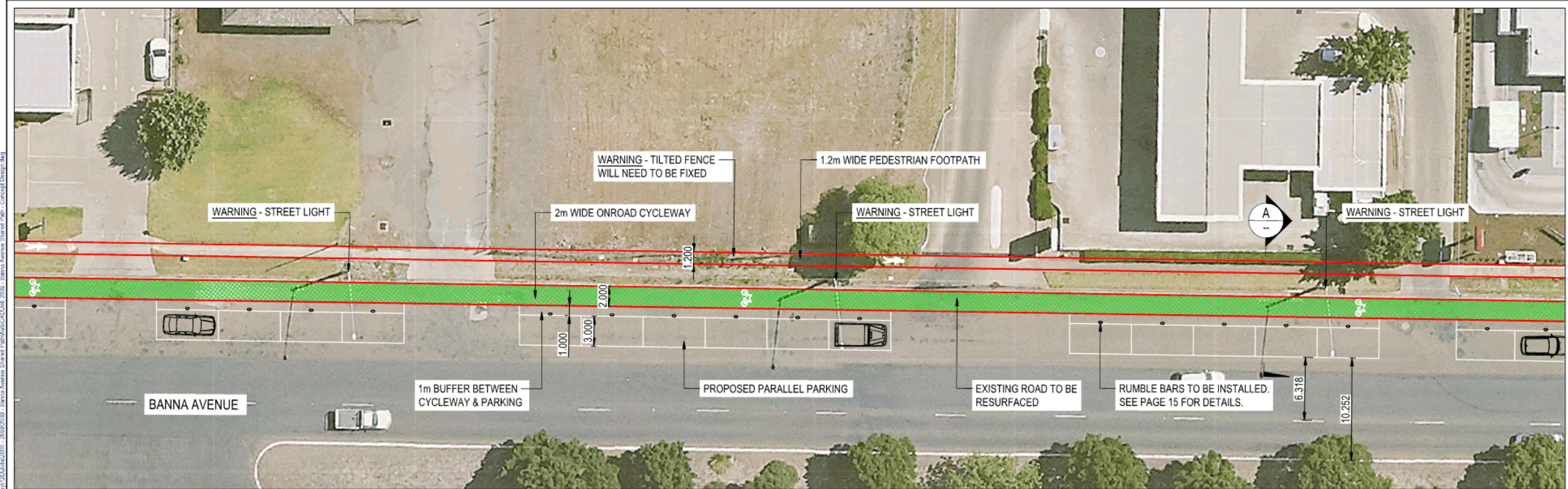
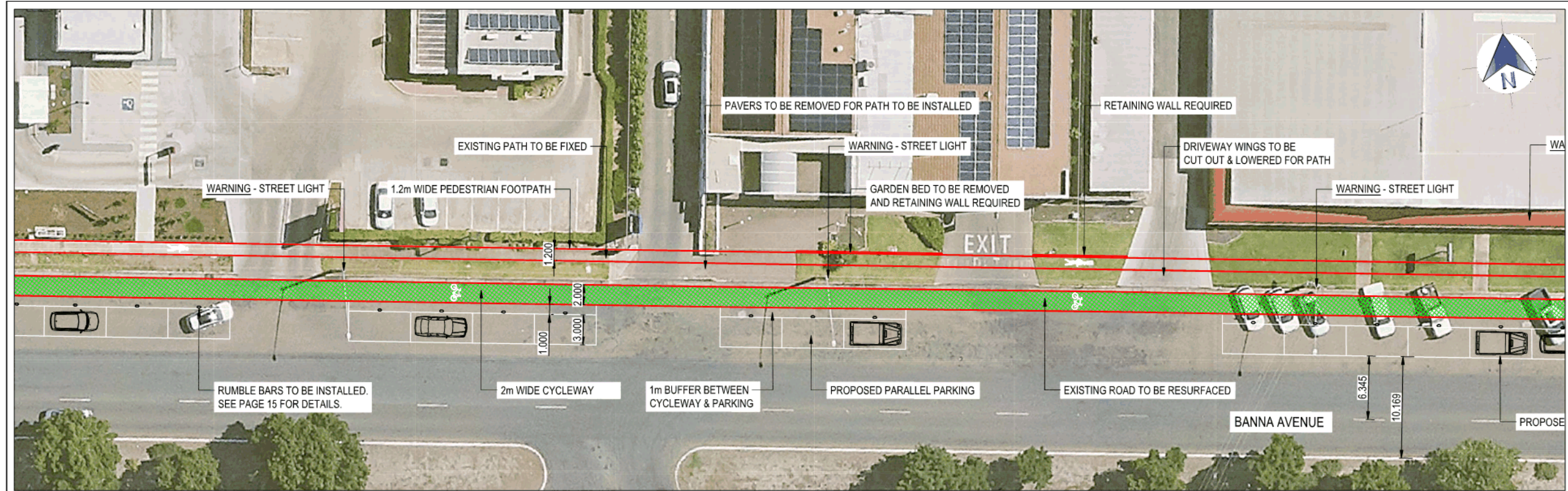
Stages

COMMUNITY GARDENS LARGE SCALE EVENT MASTERPLAN STAGES		
STAGE 1 - 4		\$307,500.00
1	Flagpole	
2	Entrance gates	
3	Fencing	
4	Shade Sail Behind stage	
STAGE 5 - 11		\$560,397.50
5	Service Road	
6	Honey Locus Shade Master	
7	Light Bollards	
8	Electrical Pillars	
9	Earthworks (Raising Platform)	
10	Shade Sails 6	
11	Moving Sound box	
STAGE 12 - 14		\$162,415.00
12	Shade Sails 4	
13	Shade Sails 9	
14	Honey Locus Shade Master	

This page has intentionally been left blank.

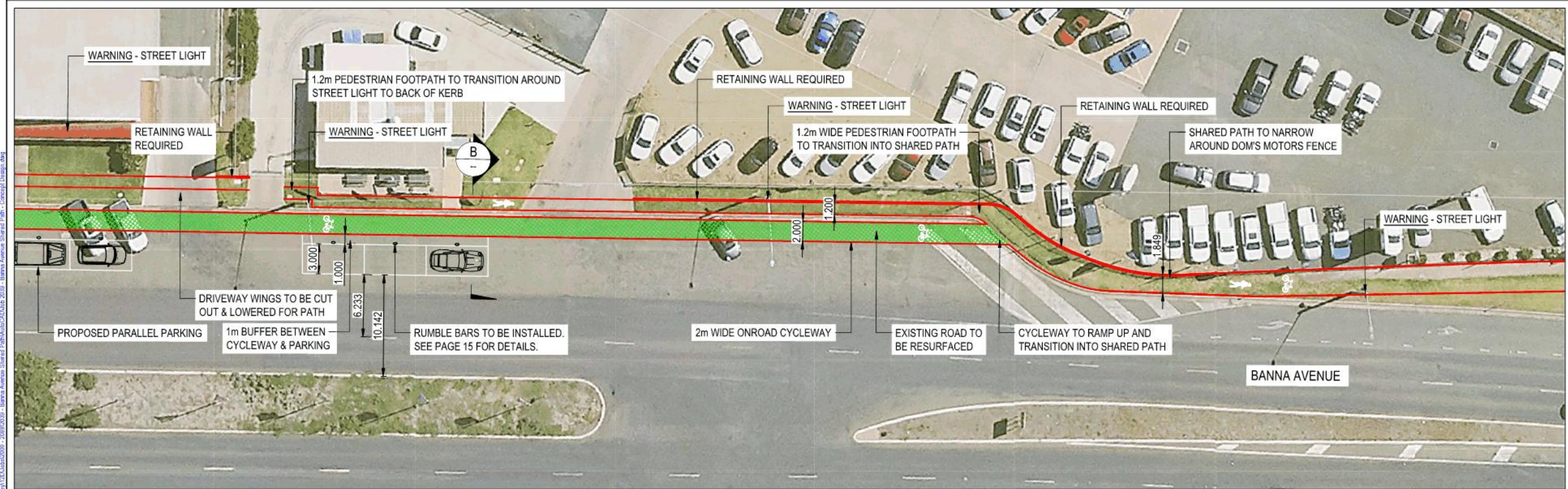
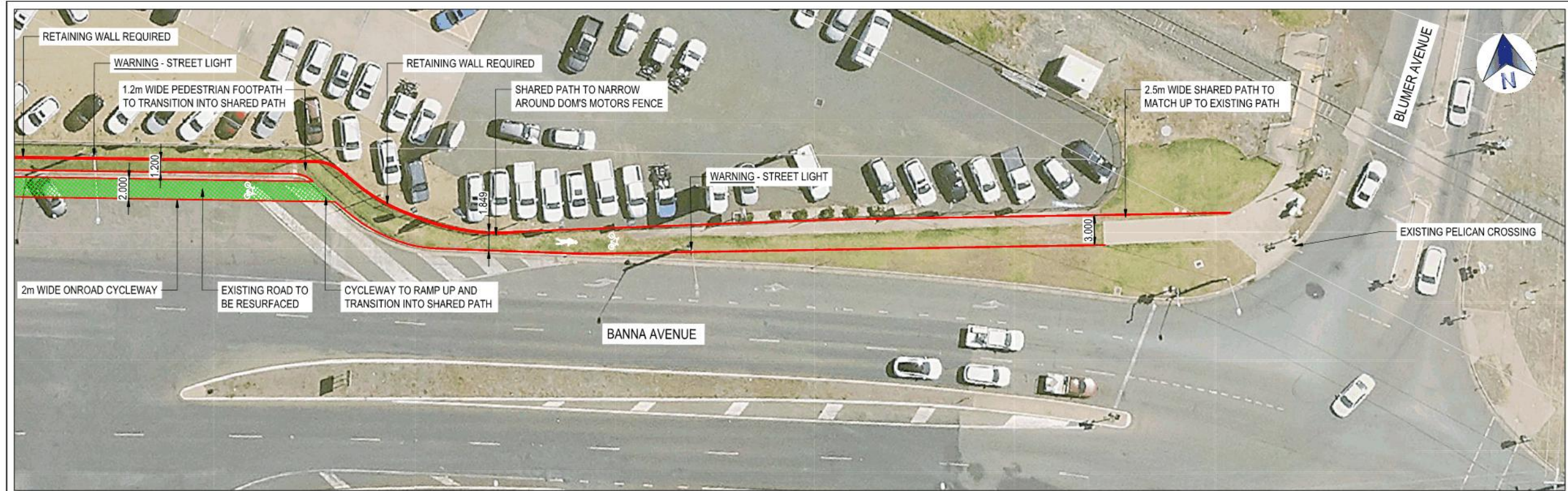


<p>COPYRIGHT This drawing and the information shown hereon is the property of Griffith City Council and may not be used for any other purpose than that for which this drawing is supplied. Any other use, copying or reproduction of all or any part of this drawing is prohibited without the written consent of Griffith City Council.</p>						<p>DESIGNED BY: J. CARROZZA</p>		<p>PROJECT TITLE & LOCATION: PROPOSED BANNA AVENUE SHARED PATH - PUBLIC CONSULTATION BETWEEN CROSSING STREET & BLUMER AVENUE, GRIFFITH NSW 2680</p>		<p>JOB NUMBER: 2039 SHEET NUMBER: 1 OF 4</p>	
<p>REVISION:</p>		<p>AMENDMENT OR REASON OF ISSUE:</p>		<p>ISSUE DATE:</p>		<p>CHECKED BY: J. CARROZZA</p>		<p>APPROVED FOR CONSTRUCTION BY: J. REZZO P. BADENHORST</p>		<p>DRAWING NUMBER: 2039-SO-001</p>	
<p>REVISION:</p>		<p>AMENDMENT OR REASON OF ISSUE:</p>		<p>ISSUE DATE:</p>		<p>CHECKED BY: J. CARROZZA</p>		<p>APPROVED FOR CONSTRUCTION BY: J. REZZO P. BADENHORST</p>		<p>REVISION: B</p>	
<p>REVISION:</p>		<p>AMENDMENT OR REASON OF ISSUE:</p>		<p>ISSUE DATE:</p>		<p>CHECKED BY: J. CARROZZA</p>		<p>APPROVED FOR CONSTRUCTION BY: J. REZZO P. BADENHORST</p>		<p>DRAWING NUMBER: 2039-SO-001</p>	
<p>REVISION:</p>		<p>AMENDMENT OR REASON OF ISSUE:</p>		<p>ISSUE DATE:</p>		<p>CHECKED BY: J. CARROZZA</p>		<p>APPROVED FOR CONSTRUCTION BY: J. REZZO P. BADENHORST</p>		<p>REVISION: B</p>	

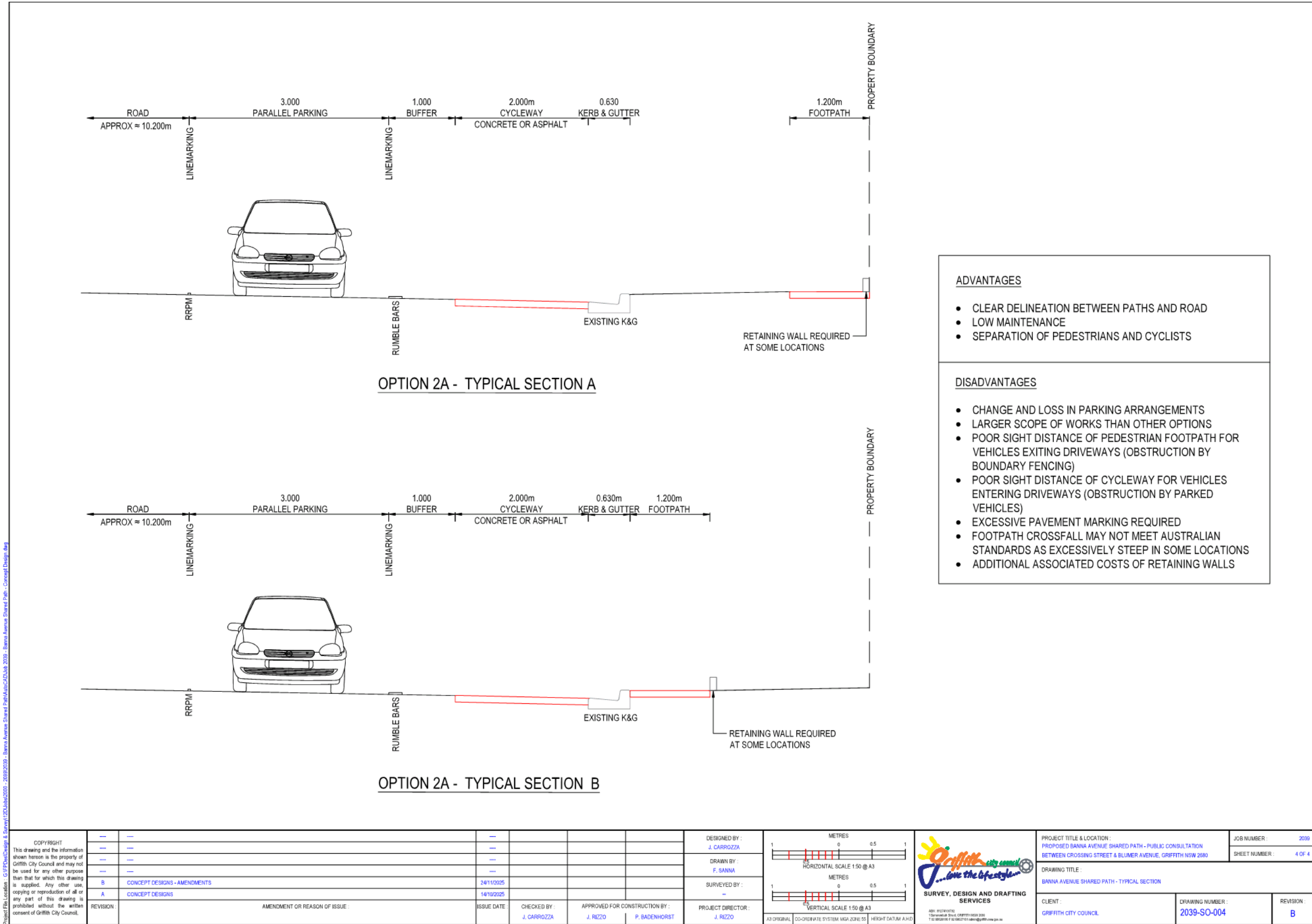


<p>COPYRIGHT This drawing and the information shown hereon is the property of Griffith City Council and may not be used for any other purpose than that for which this drawing is supplied. Any other use, copying or reproduction of all or any part of this drawing is prohibited without the written consent of Griffith City Council.</p>						<p>DESIGNED BY: J. CARROZZA</p>		<p>METRES 0 5 10 2:5 HORIZONTAL SCALE 1:400 @ A3</p>		<p>PROJECT TITLE & LOCATION: PROPOSED BANNA AVENUE SHARED PATH - PUBLIC CONSULTATION BETWEEN CROSSING STREET & BLUMER AVENUE, GRIFFITH NSW 2880</p>		<p>JOB NUMBER: 2039 SHEET NUMBER: 2 OF 4</p>			
<p>REVISION</p>		<p>AMENDMENT OR REASON OF ISSUE</p>		<p>ISSUE DATE</p>		<p>CHECKED BY: J. CARROZZA</p>		<p>APPROVED FOR CONSTRUCTION BY: J. RIZZO P. BADENHORST</p>		<p>PROJECT DIRECTOR: J. RIZZO</p>		<p>DRAWING NUMBER: 2039-SO-002</p>		<p>REVISION: B</p>	
<p>B CONCEPT DESIGNS - AMENDMENTS 14/11/2025</p>										<p>CLIENT: GRIFFITH CITY COUNCIL</p>					
<p>A CONCEPT DESIGNS 14/10/2025</p>										<p>DRAWING TITLE: BANNA AVENUE SHARED PATH</p>					

Project File Location: G:\PDC\Design & Survey\2039 - Banna Avenue Shared Path - Concept Design.dwg



COPYRIGHT This drawing and the information shown hereon is the property of Griffith City Council and may not be used for any other purpose than that for which this drawing is supplied. Any other use, copying or reproduction of all or any part of this drawing is prohibited without the written consent of Griffith City Council.								DESIGNED BY: J. CARROZZA		SURVEY, DESIGN AND DRAFTING SERVICES	PROJECT TITLE & LOCATION: PROPOSED BANNA AVENUE SHARED PATH - PUBLIC CONSULTATION BETWEEN CROSSING STREET & BLUNER AVENUE, GRIFFITH NSW 2680		JOB NUMBER: 2039 SHEET NUMBER: 3 OF 4				
REVISION AMENDMENT OR REASON OF ISSUE:		ISSUE DATE		CHECKED BY: J. CARROZZA		APPROVED FOR CONSTRUCTION BY: J. RIZZO, P. BADENHORST		DRAWN BY: F. BANNA			DRAWING TITLE: BANNA AVENUE SHARED PATH		CLIENT: GRIFFITH CITY COUNCIL		DRAWING NUMBER: 2039-SO-003		REVISION: B
5 0 5 10 METRES 2.5 HORIZONTAL SCALE 1:400 @ A3																	





DISABILITY INCLUSION ACTION PLAN

2026-2030



Image: People taking part in the International Day of People with Disability street walk.

Contents

Acknowledgement	3
Message from the Mayor	4
Disability, Access and Inclusion	5
Introduction	6
Key policies and legislation	7
Our community	8
Disability Australia wide	10
How we developed this plan	12
What our community said	13
Focus areas	15
Our Actions	16
• Liveable communities	17
• Improving systems and processes	20
• Employment	22
• Attitudes and behaviours	25
What we've achieved	28
Monitoring, review and reporting	33
Resources	33

The colour choices in this document have been made as accessible as possible using the Vision Australia Colour contrast checker.

Acknowledgement

Griffith is located in the heart of the Wiradjuri Nation – the largest nation of Aboriginal and Torres Strait Islander people in Australia.

Griffith City Council recognises Aboriginal people in the history and growth of Griffith and its surrounding villages. As such, Council acknowledges the Wiradjuri people as the traditional owners of the land and pays respect to Wiradjuri Elders past, present and future.

We recognise and respect the Wiradjuri cultural heritage, beliefs and their ongoing relationship with the land for people living today.

Council also acknowledges the contribution made to this community by the many and diverse cultural groups that have greatly contributed to the social and economic wealth of this region.



Image: A local Aboriginal dance group.

Message from the Mayor



Griffith City Council recognises that disability inclusion is an ongoing responsibility, not a one-time commitment. This revised Disability Inclusion Action Plan sets out how Council will continue to improve access, inclusion and participation across our organisation and the wider community.

The Plan builds on previous work while responding to current needs, expectations and feedback. It reflects what we have heard from people with disability, carers, community organisations and service providers, and provides a clear framework to guide Council's actions over the coming years.

Through this Plan, Council is focused on practical outcomes, ensuring our services, facilities, information and decision-making processes are accessible, and that inclusion is considered as part of everyday planning and service delivery. It also reinforces our commitment to inclusive attitudes, employment opportunities and meaningful participation in community life.

This Disability Inclusion Action Plan aligns with Council's broader vision for Griffith as a progressive and inclusive community where people feel respected, supported and able to participate fully.

I encourage Councillors, staff, community partners and residents to support the delivery of this Plan. By working together, we can continue to improve how our city responds to the needs of people with disability and ensure Griffith remains a place where everyone can live with dignity, independence and choice.

Doug Curran
Mayor

Disability



is a long-term physical, mental, intellectual or sensory impairment which in interaction with various barriers may hinder the full and effective participation in society on an equal basis with others.

Access



refers to any outcome that is achieved by the removal of 'barriers' or obstacles that may impede an individual's rights to engage in a chosen activity in a manner that is equitable and dignified. 'Barriers' can include obstacles in the built environment as well as communication or attitudinal obstacles in the social environment.

Inclusion



is the process whereby every person (irrespective of age, disability, gender, religion, sexual preference or nationality) who wishes to, can access and participate fully in all aspects of an activity or service in the same way as any other member of the community.



Image: Clients of GPSO playing soccer with a carer.



Image: Council staff member engaging with community member.

Introduction

Council is committed to building an inclusive, respectful and diverse community where all residents and visitors can feel safe, welcomed and supported. Council recognises that inclusion and accessibility are essential to ensuring people with disability can participate fully in community life.

The 2026–2030 Disability Inclusion Action Plan (DIAP) reinforces this commitment by providing a clear framework to improve accessibility, remove barriers and support equitable participation for people with disability. The Plan identifies practical actions that aim to enhance access to Council services, facilities, programs and employment opportunities, while strengthening inclusion across the community.

Council's DIAP focuses on improving access, inclusion and participation for people with disability through the following key objectives:

- Fostering positive community attitudes and behaviours by promoting awareness, understanding and respect, and reducing stigma
- Creating liveable and accessible communities by improving access to public spaces, facilities and transport to support participation
- Supporting access to meaningful employment by removing barriers and promoting inclusive and supportive workplace practices
- Improving access to services and systems by ensuring information, customer service and programs are accessible to all.

The 2026–2030 DIAP builds on the experiences, challenges and achievements of previous plans and outlines a roadmap for continued improvement. The Plan has been developed in consultation with the local community, with valuable input from the Griffith Disability Inclusion and Access Committee and local service providers, ensuring it reflects lived experience and community priorities.

Implementation of the DIAP is a whole-of-Council responsibility and requires collaboration across all departments. The Disability Inclusion and Access Committee will continue to provide advice and guidance to support effective implementation and ensure alignment with community needs and legislative requirements.

Key policies and legislation

In 2014, the NSW Government passed the Disability Inclusion Act which said that all local councils must have a Disability Inclusion Action Plan. Councils are required to review their Disability Inclusion Action Plans every four years.

Other key policies and legislation include:

- United Nations Convention on the Rights of Persons with Disabilities (UNCRPD)
- Australia's Disability Strategy 2021-2031
- Disability Discrimination Act 1992
- Fair Work Act 2009
- National Disability Insurance Scheme (NDIS)
- National Standards for Disability Services
- NSW Disability Inclusion Plan
- NSW Anti-Discrimination Act 1977 (ADA)
- NSW Disability Inclusion Act 2014



Image: People painting and eating cupcakes.

Our community profile



27,340
Population
ERP 2024

31,421
Population
2046
(forecast.id)



4,441 or 16.7% of
Griffith residents are
living with a disability



22%
Born overseas



23%
Speak a language other than
English at home



10%
of residents identify as carers

Snapshot of disability in Griffith

5.4%
of people need help in their day to day lives due to disability



2,498
provide unpaid assistance to a person with a disability



46.2%
aged 85 and over require assistance



A chat with Steph

What do you like to do for fun?

I like to go fishing and go to respite at GPSO and hang out with my friends. I also like to go to the movies and the pool. Every week we go to different places for girls night and I love cocktails.

What do you appreciate about Griffith?

That I have really good friends and we have good restaurants in Griffith. My favourite restaurant is Exies.

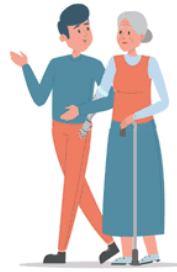
What is one thing you would like Griffith to know about people living with a disability?

That everyone is the same and should be treated the same.



Disability Australia wide

5 over **Million** Australians are living with disability.



1.2 million people identify as a primary carer

43.8% of which have a disability themselves

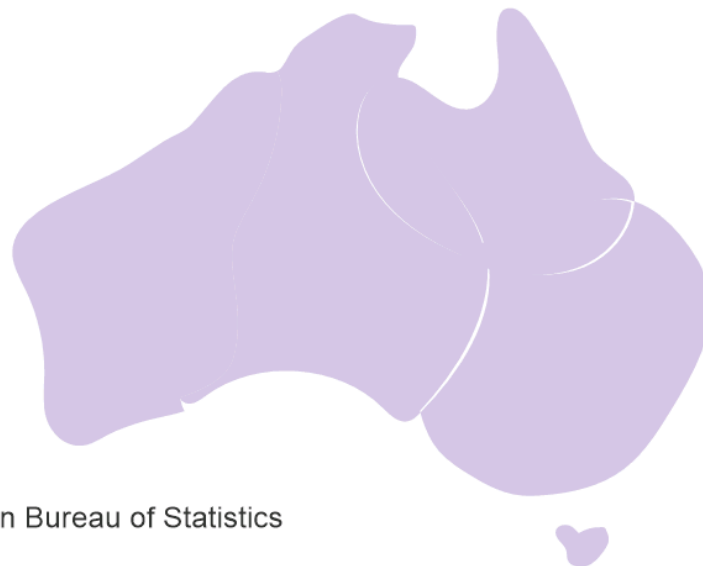


That's **1 in 5** people

52.3% of older Australians live with disability



Disability prevalence is similar **males (21.0%)** and **females (21.8%)**



2022 | Australian Bureau of Statistics



Image: Children using a communication board in a local park.



How we developed this plan

Developing our DIAP

Council undertook extensive community consultation for this Plan between November 2025 and February 2026.

Additionally, further engagement was carried out in early 2025 when we reviewed the previous Plan.

Community and Staff engagement

To inform the development of the Plan, Council undertook community engagement with people with disability, their carers and service providers through face-to-face engagement, online surveys and social media, receiving 91 direct responses. Two surveys were developed, a comprehensive version and an easy read version, to support accessibility and broad participation.

The surveys were promoted through Council's Community Newsletter, reaching more than 1,300 electronic subscribers, and distributed to 17 local schools. Feedback was also sought from 49 service providers via email, with surveys shared through Interagency meetings to extend reach across community networks. They were also promoted across Council's social media channels.

Hard copies of the surveys were made

available at Council Café, Griffith City Library, Council's administration building, the International Day of People with Disability event and the 2025 Aged Care Expo.

Griffith City Council Disability Inclusion & Access Committee

Council's Disability Inclusion and Access Committee (DIAC) brings together members with different lived experiences, whether it be those living with disability, a carer or those who work or volunteer in the service provider space. The Committee's purpose is to;


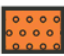



- Advise Council on access and mobility issues
- Contribute to the review of the DIAP.
- Provide accessibility advice on Council plans and strategies
- Advise on accessibility in public facility design
- Make submissions on major development proposals.

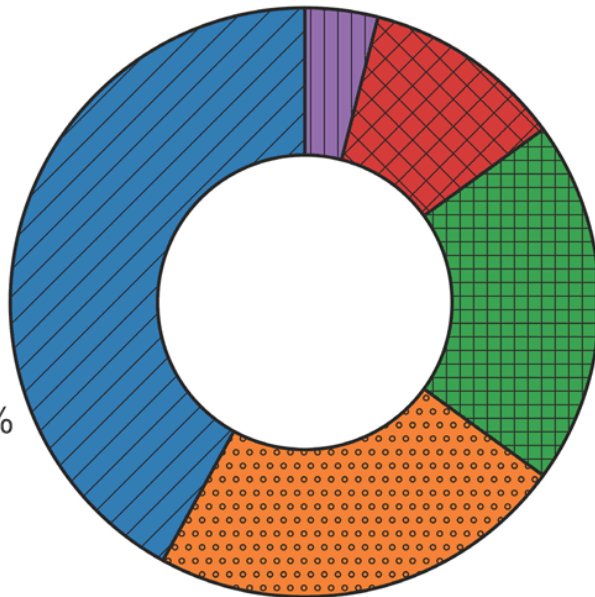
Consultation with Council departments

All Council departments were involved in informing the Plan to ensure a comprehensive consideration of actions. In addition, all staff were invited to provide input via the survey.

What our community said:

91 People took the survey

-  Lived experience with disability 42%
-  Family member or carer 23%
-  Community member 20%
-  Sector employee 11%
-  Council employee 4%



64% of respondents said that disability is celebrated positively or neutrally in our LGA



The most commonly reported disability types were **brain and neurological, thinking and learning** and **physical disabilities**



37 People identified **employment opportunities** as a focus area



The survey indicated that the **physical barriers** that exist in our LGA include footpaths, ramps, disability parking and accessible toilets. However, **72%** indicated that spaces were **easy to access**



Image: Council staff member engaging on the Plan with an elderly man on mobility cart.

Focus areas

The 2026–2030 Disability Inclusion Action Plan outlines how Council will work to build a community where people with disability feel welcomed, included and empowered. It identifies practical actions to remove barriers and ensure equal access to services, facilities, activities and opportunities across the community.

The Plan is built around four main focus areas:



Liveable communities

Creating liveable communities



Systems and processes

Improving access to mainstream services



Employment within our Local Government Area

Increasing access to meaningful employment



Attitudes and behaviours

Developing positive community attitudes towards all abilities

A chat with Ella

What do you like to do for fun?

I like going to the wineries and I enjoy going for long walks with my dog and I enjoy being around the lake.

What do you appreciate about Griffith?

I love all the different festivals. I really like the Orange Sculptures and I like going to the Show. I used to dance at La Festa. I love the different events in Griffith.

What is one thing you would like Griffith to know about people living with a disability?

No matter what – you're still who you are.





Our Actions

The following actions outline how Council will implement targeted strategies and work in partnership with the community and key stakeholders to improve inclusion and accessibility and support a more inclusive community. These actions align with our Community Strategic Plan.

Image: An elderly lady with a walker being assisted while at the theatre.

Liveable communities

Griffith City Council acknowledges the importance of creating a liveable community for all residents to live, learn, work and play as they wish.

Outcome	Actions	Measures	Responsibility	Time frame	CSP link
Inclusive programs and activities	Support the promotion of accessible community programs.	Number of programs promoted	Facilities Managers and organisers Community Development Disability Inclusion and Access Committee Communications Marketing	O	4.4
Accessible parks, play and sport	Develop and promote inclusive recreation spaces.	Number of spaces upgraded Number of events held	Sustainable Development Infrastructure and Operations Facilities Managers Tourism Event Coordinator	O	4.7
Inclusive social and recreation options	Support safe, diverse activities.	Number of activities promoted and supported	Facilities Managers Program Managers Event Coordinator Community Development Communications Marketing	S-O	4.4

Time frame legend:

O = Ongoing S = Short term M = Medium term L = Long term A = Annually CT = Council term (4 years)

Outcome	Actions	Measures	Responsibility	Time frame	CSP link
Improved transport and connection	Promote accessible bus information, safer crossings, mobility parking, and key footpaths.	Number of transport infrastructure improved Promote bus service options through local promotion and on council's digital platforms	Infrastructure and Operations Sustainable Development Communications Traffic Coordinator	O	6.2
Accessible public amenities	Make improvements to existing amenities where needed and explore opportunities and funding for adult change facilities.	Number of improved amenities including those under the MLAK system	Sustainable Development Facilities Managers Infrastructure and Operations	M-L	4.8
Healthy and supportive environments	Partner and/or promote with health providers for education and mental health awareness.	Increase in community engagement	Facilities/Program Managers Event Coordinator Community Development Communications	S-O	4.1
Accessible Council assets and facilities	Continue to improve access and usability of Council assets and facilities where possible.	Increase positive feedback on access in Council facilities and services	Facility managers	O	6.1

Time frame legend:

O = Ongoing S = Short term M = Medium term L = Long term A = Annually CT = Council term (4 years)

Outcome	Actions	Measures	Responsibility	Time frame	CSP link
Inclusive events that support tourism in Griffith	Continually accept customer feedback from visitors.	Maintain a register of customer experiences and recommendations for those visiting the area	Facilities Tourism Events	O	5.6
Improved accessible footpaths	Continue to review and maintain priority actions in Council's Pedestrian and Bicycle Strategy.	Length of pathways or footpaths upgraded and completed	Infrastructure and Operations	A	6.2
Inclusive and accessible public spaces (Council owned or managed)	Ensure significant development proposals in the public domain are reviewed by Disability Inclusion and Access Committee.	Reviewed developments	Sustainable Development Disability Inclusion and Access Committee	O	7.1

Time frame legend:

O = Ongoing S = Short term M = Medium term L = Long term A = Annually CT = Council term (4 years)

Improving systems & processes

Council acknowledges how important it is for people to access the services and support they need. Council is committed to improving ways to deliver and promote information, events, and services and interact with residents and stakeholders.

Outcome	Actions	Measures	Responsibility	Time frame	CSP link
Council information is accessible to people with disability	Continue to improve Easy Read information for community consultation. Eg. surveys.	Number of accessibility improvements, including Easy-Read versions of documents created	Communications Customer Service All staff	S-O	1.1
Website information is accessible and easy to understand	Increase readability of Council's website and ensure it is compliant.	Number of improvements made to Council's website Increase usability percentage on website	Information Management Communications Facility managers Marketing	S-O	1.1
Staff demonstrate greater understanding of diverse disabilities in their interactions with the community	Provide disability awareness through communication and training through organisations such as Human Rights Commission.	Feedback received and mentioned throughout Council's internal newsletter	All Staff Human Resources Workforce Planning	O	1.1

Time frame legend:

O = Ongoing S = Short term M = Medium term L = Long term A = Annually CT = Council term (4 years)

Outcome	Actions	Measures	Responsibility	Time frame	CSP link
Strong connections to organisations and networks that support people with disability	Share information that guides individuals toward relevant support organisations and networks. (Including information for newly diagnosed members of the community).	Continually update organisations and community groups on the Community Service Directory	Community Development	O	2.1

Time frame legend:

O = Ongoing S = Short term M = Medium term L = Long term A = Annually CT = Council term (4 years)



Employment

Council understands the important role employment plays, providing people with a sense of independence and security. Council is an Equal Opportunity Employer and welcomes diversity in the workplace. Council encourages all people regardless of their individual differences to apply for any advertised positions. Council commits to providing its staff with the appropriate support and resources required to assist their individual needs.

Outcome	Actions	Measures	Responsibility	Time frame	CSP link
Inclusive pathways to volunteering for people with disability at Council	Continue to strengthen inclusive volunteering pathways that support meaningful contribution to society.	Volunteering policy created and adopted	Workforce Planning Facility Managers Workplace Relations	S-M	5.2
Recruitment is inclusive for the whole community	Review employment and recruitment processes and procedures for accessibility.	Number of reviews completed	Workforce Planning	O	5.2
A workplace culture that is inclusive and supportive of people with disability	Support leadership development and promote inclusive workplace practices across council.	Number of managers meetings delivered Number of training opportunities provided	Managers Workforce Planning Workplace Relations	O	1.1

Time frame legend:

O = Ongoing S = Short term M = Medium term L = Long term A = Annually CT = Council term (4 years)

Outcome	Actions	Measures	Responsibility	Time frame	CSP link
A workplace culture that actively recognises and supports employees who are carers of people with disability, through improved awareness, flexible workplace practices, and access to best practice resources	Investigate programs, resources and training to strengthen awareness, capability, and workplace practices that support staff who are carers of people with disability.	Council to formally register with the Carers and Employers program	Workplace Relations	S-O	1.1
Improve organisational learning and awareness	Deliver information on inclusive communication with a focus on hidden disabilities and neurodiversity.	Number of times information is promoted	Workforce Planning Workplace Relations Community Development	S-M	1.1
Job Opportunities	Promote job and training opportunities to create awareness of positions available.	Number of positions promoted	Workforce Planning Communications	S-M	2.2

Time frame legend:

O = Ongoing S = Short term M = Medium term L = Long term A = Annually CT = Council term (4 years)

Outcome	Actions	Measures	Responsibility	Time frame	CSP link
Improve local industry commitment to inclusive employment and volunteering.	Discuss volunteering and employment opportunities with businesses and business support organisations in Griffith Local Government Area.	Promote inclusive businesses and encourage participation at employment expos	Economic Development	S-M	5.2
Continuous updates to Council Policies	Review Council policies such as Anti-Discrimination and Equal Employment Opportunity, Sick Leave, Carers Leave and Wellbeing Leave.	Number of policies endorsed	Workplace Relations Workforce Planning Governance Payroll	CT	1.1
Inclusive pathways to employment for people with disability at Council	Continue to strengthen inclusive employment pathways and policies that support participation by people with disability.	Number of applicants who declared having a disability	Workforce Planning Facility Managers Workplace Relations	S-M	5.2

Time frame legend:

O = Ongoing S = Short term M = Medium term L = Long term A = Annually CT = Council term (4 years)

Attitudes & behaviours

Council recognises the importance of promoting positive attitudes and behaviour towards people with a disability. Council demonstrates their commitment through the development and implementation of this Plan and by working closely with members of the Disability Inclusion Access Committee to continue to improve.

Outcome	Actions	Measures	Responsibility	Time frame	CSP link
Community awareness on disability matters	Encourage positive attitudes through local promotion and share disability organisation news.	Number of media releases Increased Electronic Direct Mailing list	Communications Tourism Community Development	O	1.1
Inclusive participation in programs and events	Continue to promote social programs.	Number of events, programs and workshops promoted	Event Coordinators Tourism Community Development Facilities Disability Inclusion and Access Committee	O	4.4
Recognition	Grow participation in International Day of People with Disability and inclusive events partnering with businesses and organisations.	Number of events, programs and workshops promoted	Event Coordinator's Community Development Facilities Marketing Communications Economic Development	O	4.2

Time frame legend:

O = Ongoing S = Short term M = Medium term L = Long term A = Annually CT = Council term (4 years)

Outcome	Actions	Measures	Responsibility	Time frame	CSP link
Council consultation includes contributions from people with lived experience	Strengthen co-design opportunities by actively involving people with lived experience.	Number of consultations that took place in the community (including DIAC meeting updates)	Urban Design Facilities Communications Disability Inclusion and Access Committee	O	1.2
Investigate or introduce new methods or mediums for communication, distribution and provision of Council information and resources	Review of Community Engagement Strategy.	Review Council's Community Engagement Strategy and develop new or improved methods	Communications Customer Service	CT	1.1
Visual communications include pictures of people with disability	Visual communications and public documents contain disability representation.	Number of documents reviewed	All Staff	O	1.1

Time frame legend:

O = Ongoing S = Short term M = Medium term L = Long term A = Annually CT = Council term (4 years)



Image: Man in wheelchair holding a painting.

What we've achieved

Location	Action
Bicycle Pump Track Olympic Street	<ul style="list-style-type: none"> • Accessible seating, shelter, BBQ, bubbler, bike repair station
Borland Leckie Park	<ul style="list-style-type: none"> • Installed accessible and inclusive play equipment, seating and footpath • Communication board erected for inclusive communication
Burley Griffin Community Gardens	<ul style="list-style-type: none"> • City Park toilet amenities with disabled toilet
Bus Shelters – new / upgraded	<ul style="list-style-type: none"> • Hanwood School bus shelter • Banna Ave (Outside the courthouse) bus shelter • Yambil St bus shelter • Koorngal Ave Bus Shelter • Clifton Boulevard bus shelter • Middleton Ave bus shelter • Kookora St bus shelter • Griffith Hometown complex (New McDonalds)
Campbell Wetlands Boardwalk	<ul style="list-style-type: none"> • Accessible walkway • New shelter with ramp and accessible seating
Child Safe Framework	<ul style="list-style-type: none"> • Child Safe Policy, guidelines for staff and Code of Conduct implemented
Council events	<ul style="list-style-type: none"> • ConnectYOUTH roller skating disco - Sensory session held • Colour Fun Run - Inclusive and sensory area • Olympic Street and Memorial Park Activation - Inclusive events • Wheelchair Basketball Trials
Enticknap Park	<ul style="list-style-type: none"> • In addition to providing accessible playground equipment, Council has installed a new toilet block with disabled toilets and parking allotment with disabled parking places on Murphy Crescent

What we've achieved

Location	Action
Footpath installations	<ul style="list-style-type: none"> • Hanwood to Murphy Road • Griffith to Yoogali pathway • Sidlow Road including Willandra Avenue roundabout to Griffith Retirement Estate • Speirs Street • Goodooloo Street to Noorla Street • Pedestrian bridge over canal – Merrigal to Noorla Street • Shared path around Griffith Regional Sports Centre • Canal to Coolah Street footpath and new bridges as part of the HerWay project including Dave Taylor Park and Community Gardens • Footpaths in Pioneer Park
Griffith City Library	<ul style="list-style-type: none"> • Ramp access and automatic doors • Monthly sensory movies • Home delivery service available to anyone with a disability - permanent or short-term • Reading aids/listening devices for vision impaired people provided. • Corridor widened for greater access into parents' room • New shelving installed to improve accessibility • Tech Savy Seniors program • Drop in Marian Catholic College Tech Help
Griffith Art Gallery	<ul style="list-style-type: none"> • Ramp installed at the front entrance • Sensory tours for some exhibitions
Hanwood Sports Amenities	<ul style="list-style-type: none"> • Adult change table • Accessible toilet and change area • 2 designated allotments for disabled parking

Location	Action
Griffith Regional Sports Centre	<ul style="list-style-type: none"> • Disabled parking and toilets • Footpaths linking both entrances of the new facility • Hosts and facilitates a variety of programs and activations designed to engage community members living with a disability. Some of these include: Come and Try Athletics, Indoor Multi-Sport Day (Primary Schools), Schools Boccia Tournament and Powerchair Soccer
Griffith Regional Theatre	<ul style="list-style-type: none"> • Morning Melodies - seniors event • Handrails in auditorium • Noise cancelling earplugs available
Griffith Regional Art Gallery	<ul style="list-style-type: none"> • Sensory sessions • Painting workshops • Art Space Exhibition
Griffith Regional Aquatic and Leisure Centre	<ul style="list-style-type: none"> • Seniors free classes during Seniors Week • Additional needs group classes • Private lessons • Charging points for mobility scooters • Designated disabled car parking
Her Way 2680 project	<ul style="list-style-type: none"> • Installation of 2 x shared bridges with ramped landings • 2 new bus shelters with wheelchair accessibility • Footpaths and access to all art murals as a part of this project • Upgrade of Don Best Park including wheelchair access all around and • Accessible community garden and bubblers
Kooyoo Mall	<ul style="list-style-type: none"> • Fully paved flattened surface for all users • Accessible seating and MLAK charging point for mobility scooters
Memorial Park Griffith	<ul style="list-style-type: none"> • Additional paved and larger access entries
Mountain Bike Track	<ul style="list-style-type: none"> • Accessible footpaths and ramp to shelter • Disabled toilet • Padlocked gate with MLAK lock • Accessible bubbler

Location	Action
Other	<ul style="list-style-type: none"> • Pedestrian bridge over canal – Merrigal Street between Noorla Street and Kywong Street • Additional parking and a shared pathway around Griffith Regional Sports Centre as part of the Sports Precinct development • The no parking zone in front of Griffith Central allows for people with mobility parking permits to drop-off and pick-up, as well as taxis
Parking	<ul style="list-style-type: none"> • Railway Street car parks • New accessible parking spaces near CBD
Public Toilets	<ul style="list-style-type: none"> • Re-introduction of MLAK disabled key system
Skate Park upgrade	<ul style="list-style-type: none"> • Disabled friendly ramps and access
Women's Land Army Park upgrade	<ul style="list-style-type: none"> • Accessible footpath and exercise equipment
Wood Park	<ul style="list-style-type: none"> • Installed accessible and inclusive play equipment, seating, shelter, BBQ and exercise machines
Airport	<ul style="list-style-type: none"> • Implemented policies and procedures at the Airport to support the needs of the people with disabilities in the community
Planning	<ul style="list-style-type: none"> • Incorporated the accessibility conditions to DAs for non-residential developments
Griffith Pioneer Park Museum	<ul style="list-style-type: none"> • Upgrade to paths around the Museum, providing access to a further six exhibitions • Improved access around the Museum with new paths installed, in particular the accessible pathways at the entrance of the Museum • Videos with caption for two exhibitions

Location	Action
Governance and Communications	<ul style="list-style-type: none"> • Accessible and fully compliant website, livestream Council Meetings, access to information on Council website, provision of administration support for Disability Access Inclusion Committee, facilitate Council Cafes and Community Opinion Group meetings, community engagement, preparation of Community Strategic Plan and associated documents
Workforce Planning	<ul style="list-style-type: none"> • Modified recruitment practices, updated Equal Employment Opportunity statement on advertising, increased employment of people living with disability, provided reasonable adjustment and support for interviews, rolling out training to staff on recruitment panels - Human Rights (Building a culture of accessibility and inclusion). This training to also be rolled out to Disability Inclusion and Access Committee members
Parks and Gardens	<ul style="list-style-type: none"> • Installed accessible play equipment, upgrade to Hanwood Oval and Jubilee Oval amenities change rooms/toilets • Lake Wyangan Picnic area accessible play area, new toilets and communication boards • Tharbogang Park
Infrastructure and Operations	<ul style="list-style-type: none"> • Continue to work though the priorities listed in the Pedestrian and Bicycle Strategy adopted by Council in 2021

Monitoring, review and reporting

Councils are required to review their DIAPs regularly to ensure they remain effective and responsive to the needs of people with disabilities. Council report on progress yearly to the Department of Communities and Justice.

This plan was adopted on 16 June 2026.

Following the adoption by Council, the Disability Inclusion Action Plan was forwarded to the Disability Council NSW for endorsement.

Council will report on the DIAP action items as part of its Annual Report. The report will be publicly available on Council's website www.griffith.nsw.gov.au

Resources

Australian Human Rights Commission

Website: [Willing to Work: Good Practice Examples for Employers \(2016\) | Australian Human Rights Commission](#)

National Disability Service (NDIS)

The NDIS is a valued resource providing up to date information on policy, resources and providing events and training. To contact the NSW National Disability Service office:

T: (02) 9256 3111

E: ndsnsw@nds.org.au

Webpage: [National Disability Services](#)

Disability Council NSW

The Disability Council NSW is the official advisory body to the NSW Government on matters relating to people with disability and disability inclusion.

Webpage: [Disability Council NSW | Communities and Justice](#)

Australian Disability Network

Website: [Homepage - Australian Disability Network](#)

Griffith City Council

Phone: 1300 176 077

Connect Griffith: connect.griffith.nsw.gov.au

Community Directory: griffith.nsw.gov.au/Residents/Community/Community-Directory



Image: People enjoying a cupcake in the park.

Griffith City Council
1 Benerembah Street Griffith NSW 2680
P: 1300 176 077
E: admin@griffith.nsw.gov.au
W: griffith.nsw.gov.au